



 **HYPERLITE**
TWO THOUSAND EIGHT COLLECTION



TECH GUIDE



GND
Product designed by one of wakeboarding's true innovators Greg Nelson



SHAPED BY BUTCH
Designed by the pioneer of the 3 stage rocker... Scott Bouchard.



NOVA CORE
Named after an exploding star, Nova core gets its title through its release of energy off the wake. This core material is the lightest, most advanced polymer on the market. It is fully machined to a perfect tolerance, and then laid up for a ride like no other.



FUSION CORE
Fusion is just that, our two best core materials put together to create a strong yet snappy ride, then machined for a perfect fit.



BIO2 CORE
Our secret little recipe we have been perfecting since day one. This core material is the gold standard in the industry and used through out our line.



E CORE
Innovation thru energy. A 100% wood core brings the life of your favorite snowboard and a new dimension of wake to wake feel and control on rails.



GAMMA GLASS
This is our most advanced glass system to date. Kept frozen until the time of lay up, Gamma glass is fully impregnated with a resin system which activates after the mold is closed. This allows for the perfect ratio of resin to glass.



CARBON GRAPHITE
Aerospace grade carbon graphite builds unmatched strength and energy into every board it's put into.



PHALANX CONSTRUCTION
Named after one of the most impenetrable military formations in history, Phalanx construction is just that, a new method of building a board which joins the top laminates to the bottom creating the strongest construction possible.



ABS SIDEWALL
You have one of those rides where nothing is going your way. Just feel like smashing your board? If you have to take it out on something . . . Hope you have ABS.



MONOCOQUE CONSTRUCTION
Integrating the top glass and the bottom glass into one. Generating a more durable board on side impacts thus preventing the ol' side delamination.



LAYERED GLASS
Non-woven glass available in 4 sizes depending on the board. Over time, woven glass fibers will separate. Every Hyperlite deck will have the same snap on a double after 5 seasons as it will on the first one.



SATIN FLEX
Tailored specifically to a ladies needs. A softer glass lay up to create a softer flex and a board built to female riders standards.



LIMITED LIFETIME WARRANTY
There is no need for buyers remorse. We back our boards up.



REAL WOOD INLAY
A little piece of Mother Nature sealed into every board. These inlays are 100% real Burl wood. Lumberjack not included.



METAL FLAKE TOP
Boats shouldn't be the only ones cruising around with a little extra flash



2008 PRO MENS TEAM (FROM LEFT TO RIGHT)

BRAIN GRUBB / BRANDON THOMAS / ARRON RATHY / CHRIS O'SHEA / JIMMY LARICHE / JOSH PALMA / MIKE SCHWEENE / ERIC RUCK / JD WEBB / SHAUN MURRAY / RUSTY MALINOKSI

2008 PRO WOMEN TEAM

NICOLA BUTLER / MEGAN MAJOR / JENACEE JACKSON / DENISE DE HAAN

2008 LEGION TEAM 25 OF THE WORLDS BEST

NICK DAVIES / EDDIE VALDEZ / JACOB VALDEZ / DANNY THOLLANDER / ADAM WENSINK / ALEX SCAGLIOTTI / AUSTIN HAIR / GUNNAR SHULER / GUS SHULER / KYLE ALBERTS / JAMES HINDES / TROY ANGOLA / TYLER HEINZ / JOHN JEFFERIES / DAN BRIGHT / CHRIS DYKMANS / ROB CORUM / BRENT STAR / MATT SIMMS / BRADY SAMMONS / STEVEN WILLIAMS / JASON CLARK / DANNY BURNSTEIN / CHRIS WILLIAMS / TREVOR MARQUETTE



TABLE OF CONTENT



02	TECH GUIDE
03	TABLE OF CONTENT
04	SUB VI
05	MURRAY
06	B-SIDE
07	ERA
08	IMPERIAL
09	PULSE
10	TRIBUTE
11	ROAM
12	PREMIER / APEX
13	STATE / MOTIVE
14	SYN / BLUR
15	OPAL / EDEN
16	BOOTS
22	B-SIDE 127 / STATE 125
23	MOTIVE / DIVINE / KIDS BOOTS
24	CATALYST
25	VINYL
26	CATALYST 2.0 / PHRICTION / SCAPE
27	COEX / BROADCAST / LANDLOCK
28	VEST
32	BAGS
33	HELMETS
34	SOFTGOODS
36	BOARD SIZING CHART
37	ACCURATE LINES



142cm

138cm

SUB VI

Fins: 4 - 0.8 Chrome Sub VI

Built with a combination of the most advanced materials on the market, the Sub VI is an industry first! This series features a fully machined Nova core for perfect tolerance and response. The Sub VI is then wrapped and sealed with Gama glass and Carbon fiber. This system is the exact ratio of resin to glass and carbon for the lightest possible lay up. Finally, to make the Sub VI as strong as it is light, we introduced Phalanx construction, a method adopted from the aerospace industry. Phalanx brings the top and bottom laminates together in strategic areas to reinforce the flex and structural integrity of the board. The Sub VI is the first of its kind and poised to revolutionize the sport. Built in limited numbers and available in two sizes

Features:

- Nova Core
- Phalanx Construction
- Layered Gamma Glass
- Carbon Top Sheet
- Abrupt Continuous Rocker
- Subtle Step Down Rail
- 6 Degree Angled Fins
- Monocoque Construction
- Limited Lifetime Warranty
- Built in the USA





145cm



140cm

135cm

Board Detail



MURRAY

Fins: 2 - .85" I-Wing

Not since Snoop and Dre has a legendary duo turned out a hit this good. The all new 2008 Murray is the product of two industry icons. Shaun worked together with long time rider and designer Greg Nelson to perfect his shape for 2008. Taking everything Shaun asked for into account Greg designed a masterpiece featuring a dual rocker line which carries all the speed of a continuous rocker while on edge and the pop of a 3 stage off the wake. The variable edge design makes for a soft, forgiving center rail which transitions into a sharper cupped rail tip and tail. Combined with a canted footbed the Murray makes for a fast responsive ride without sacrificing the pop.

Features:

- Greg Nelson Design
- Dual Rocker Line
- Exaggerated Landing Zone
- Canted Footbed
- Variable Edge Design
- Monocoque Construction
- Limited Lifetime Warranty
- Built in the USA





131cm

141cm

136cm

B-SIDE

Fins: 2 - 0.8" P-Wing

It's tough to rush perfection, and when it comes to JD Webb and his first pro model, perfection is the name of the game. Hyperlite is proud to present the B-Side. Shaped by Butch, with JD looking over his shoulder every step of the way, this board combines all the features JD loves into one. With its blended three stage rocker line the B-Side is fast into the wake and built for a ton of pop. Shallow molded in fins placed close to the boards edge generate a responsive ride but also release off the wake so you don't get hung up. Finished off with real wood inlays and a custom JD badge in the center, the B-Side is the real deal.

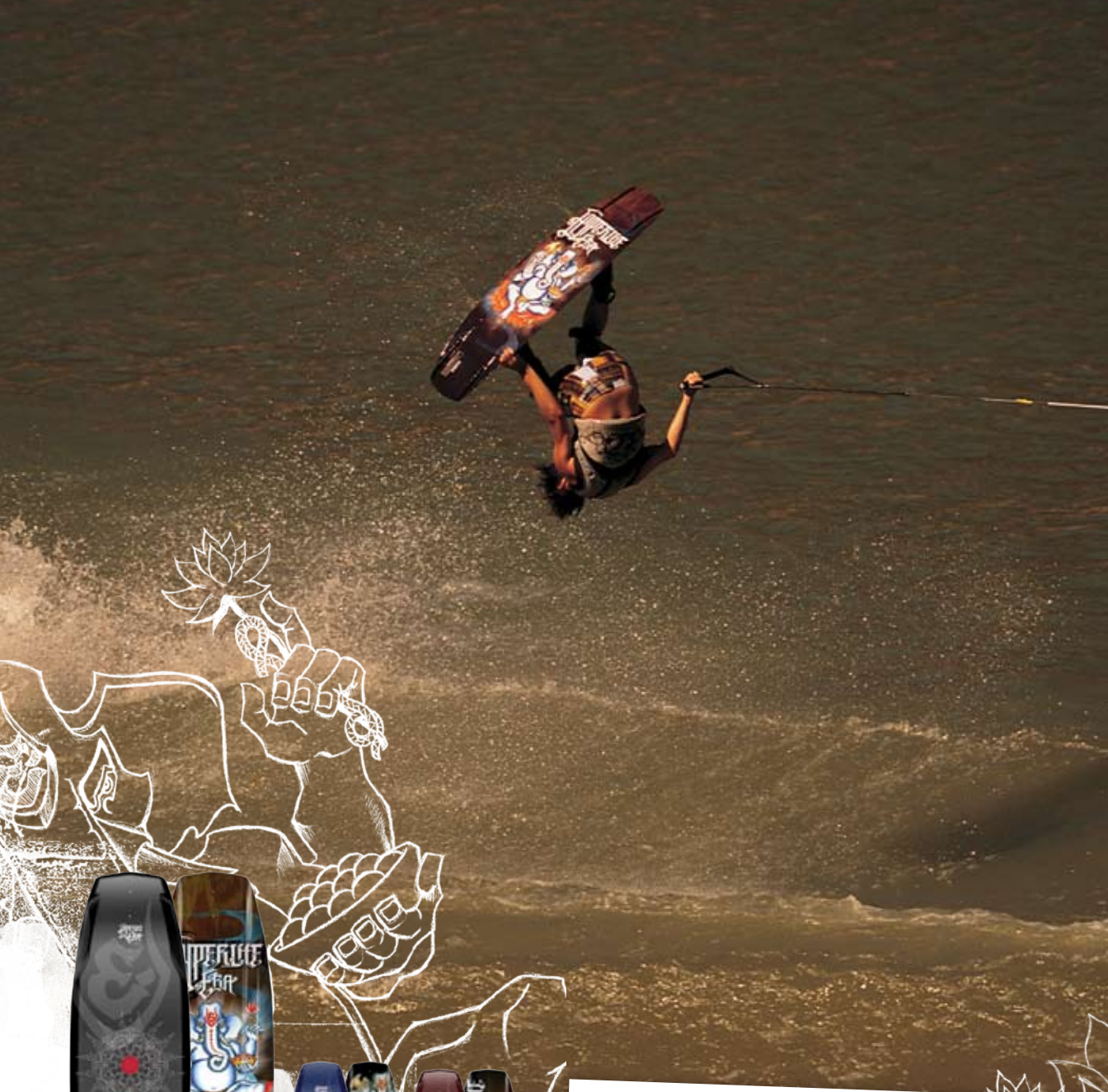
Features:

- Shaped by Butch
- Blended 3-stage rocker
- Wider Shallower Molded-in Fins
- Full Tip to Tail Channels
- Shaped Center Landing Zone
- Real Wood Inlays
- JD Badge
- MonoCoque Construction
- Biolite Core
- Layered Glass
- Limited Lifetime Warranty



Board Detail





142cm



137cm



132cm

Board Detail



ERA

Fins: 2 - 0.8" P-Wing

Faster and more explosive pretty well sum up Erik Ruck's new shape for 2008. Built off one of the best selling Hyperlite boards to date, Ruck made all the changes to perfect his ride. Starting with the rocker line, the new Era moves to a true 3 stage shape. Combine this with an increase in overall surface area and you have a recipe for massive pop. To ensure this rocker didn't slow his shape down Ruck re-designed the fret rails into a sharper, single profile for a responsive locked in edge. All in all this is the most explosive shape in the line.

Features:

- Shaped by Aaron
- Fast Edge Profile
- Thinner Overall Profile
- Monoque Construction
- Wider Shape
- Blended 3-stage Rocker
- Layered Glass
- Redesigned Fret Rails
- Limited Lifetime Warranty
- Concaved Footbed





140cm

130cm

135cm

IMPERIAL

Fins: 2 - .85" I-Wing

Scott "Butch" Bouchard's first creation in the Hyperlite line is geared for a responsive ride with a ton of pop. The Imperial series is the widest board in the line. With an 18" waist it was shaped to create maximum pop with minimum swing weight. This added surface area also creates stability. To ensure a quick, responsive ride Butch shaped a tapered sidewall that starts tall at the center of the board then tapers to a sharper step-down rail tip and tail. This blend of soft to sharp sidewall creates lift and pop towards the center of the board and a fast edge toward the ends. Aiding the Imperial in this responsive feel are its cupped molded in fins. The first board with molded fins built with a true 120 radius. Finishing up the Imperials' technical package is the center beam construction, built to break heavy landings off big airs generated by its explosive pop.

Features:

- Shaped by Scott Bouchard
- 2.8" 3 Stage Rocker
- Wide 18" Center Width
- Tapered Side Wall Construction
- Step Down Rails
- Cupped Molded In Fins
- Center Beam Construction
- Monocoque Construction
- Metal Flake
- Biolite Core
- Layered Glass
- Limited Lifetime Warranty

Board Detail





PULSE

Fins: 4- .7" A-Wing

The Pulse is a hard-edging, continuous carver. It features a mellow initial turn that sets harder in the water once on rail. The Pulse is designed with an abrupt, continuous rocker line that makes the board smooth and predictable, but gives that extra pop an aggressive rider looks for.

Features:

- 6° Angled fins
- Abrupt Continuous Rocker
- Outer Guide Molded-in Fins
- Subtle Step Down Rail
- Biolite Core
- Monocoque Construction
- Layered Glass
- Screened Graphics
- Limited Lifetime Warranty



135cm

143cm

139cm

Board Detail





137cm

142cm

132cm

TRIBUTE

Fins: 2- .7" A-Wing

The Tribute is an all new shape for '08. Built off of a 2.55" continuous rocker line it carries awesome speed into the wake and all the pop you need. Combined with a variable edge design which rolls from soft between your feet to a sharp cupped rail tip and tail, this board is as quick and responsive as they come. A new feature that strays from traditional Hyperlite shapes however is the Tributes shorter curved molded in fins. Ending almost two inches from the tip and tail of the board, its just enough fin to know its there and working but nothing to delay release off the wake. All in all the Tribute is a great new addition to the 2008 line, a shape and a ride Hyperlite has never offered.

Features:

- Greg Nelson Design
- Continuous Rocker
- Variable Edge Design
- Small Molded In fin
- Curved Flow Channels
- Small Soft Landing Feature
- Top Contours for Maximum Weight Reduction
- Biolite Core
- Monoque Construction
- Layered Glass
- Limited Lifetime Warranty

Board Detail





144cm



139cm

Board Detail



ROAM

The Roam is a jib-friendly creation that carries the snowboard season through to summer. Designed for more of a knees-bent, edge-to-edge style of riding, this series allows a rider to rely on the profile of the board to set a turn and hold an edge. Who needs fins anyway?

Features:

- E core
- Torsion Flex
- ABS Side Wall
- Layered Glass

E CORE

ABS





141cm



136cm

131cm

PREMIER

Fins: 2 .7" - A-Wing

A free style shape that releases easily off the wake while not sacrificing any of the pop in a 3 stage rocker line. Freshly re-cut, the Premier features a 17% thinner overall profile for maximum weight reduction and better flex.

Features:

- 17% Thinner Overall Profile
- Concave top deck
- Cupped Rails
- Shorter Molded-in Fins
- Monoque Construction
- Layered Glass
- Lifetime Warranty



147cm



142cm



137cm

132cm

APEX

Fins: 2 - .85" Imperial

The Apex series rides higher in the water than any of our other 3-Stage boards. The Fret Rail Design allows the board to set a quick turn and has less friction on the water. This is our most universal 3-stage rocker.

Features:

- Fret rails
- Molded-in fins
- Cupped rails
- Subtle 3-Stage Rocker
- Monoque Construction
- Layered Glass
- Lifetime Warranty





STATE

Fins: 2 – 1.1" Disorder

The State series is a shape that you don't have to learn how to ride. The features let a boarder determine their own style. This series is the building block to the rest of the high-end line.

Features:

- Toe Side / Heel Side Specific Edges
- Deeper Molded-in Toeside Fin
- Shallower Molded-in Heelside Fin
- Outer Molded-in Stabilizers
- Subtle 3-Stage Rocker
- Monoque Construction
- Layered Glass
- Lifetime Warranty



MOTIVE

Fins: 2- 1.7" Maruca Poly Fins

A board Preferred by beginner/intermediate riders who like the flowing feel of the original free ride series. The Motive provides a mellower turn with smoother lift off the wake.

Features:

- Molded-in Fins
- Continuous Rocker
- V Bottom Tunnel
- Monoque Construction
- Layered Glass
- Lifetime Warranty





137cm

132cm

SYN

Fins: 2 - 0.7" A-Wing

The Syn is an all new women's pro model shape that carries awesome speed into the wake and has all the pop you need. With a variable edge design which rolls from soft between your feet to a sharp cupped rail tip and tail, this board is as quick and responsive as they come. A new feature that strays from traditional Hyperlite shapes however is the Syn's shorter curved molded in fins. Ending almost two inches from the tip and tail of the board, its just enough fin to know its there and working but nothing to delay release off the wake.

Features:

- Greg Nelson Design
- Continuous Rocker
- Variable Edge Design
- Small Molded-in Fin
- Curved Flow Channels
- Small Soft Landing Feature
- Top Contours for Maximum Weight Reduction
- Layered Glass
- Satin Flex
- Lifetime Warranty



136cm

131cm

BLUR

Fins: 2 - .7" A-Wing

The Blur is a free style shape that releases easily off the wake while not sacrificing any of the pop in a 3 stage rocker line. Freshly re-cut, the Blur features a 17% thinner overall profile for maximum weight reduction and better flex.

Features:

- 17% Thinner Overall Profile
- Concave Top Deck
- Cupped Rails
- Shorter Molded-in Fins
- Layered Glass
- Satin Flex
- Lifetime Warranty





137cm

132cm

OPAL

Fins: 2 - 0.8" P-Wing

The Opal series rides higher in the water than any of our other 3-Stage women's boards. The Fret Rail Design allows the board to set a quick turn and has less friction on the water. This is our most universal 3-stage rocker.

Features:

- Fret Rails
- Molded-in Fins
- Cupped Rails
- Subtle 3-Stage Rocker
- Satin Flex
- Monoque Construction
- Layered Glass
- Lifetime Warranty



135cm

130cm

125cm

EDEN

Fins: 2 - 1.1" A-Wing

The Eden series is a shape that you don't have to learn how to ride. The features let a boarder determine their style. This series is the building block to the rest of the high-end line. With a softer, ladies-specific flex, the Eden is a great choice for the girl looking to take it to the next level.

Features:

- Toe Side / Heel Side Specific Edges
- Deeper Molded-in Toeside Fin
- Shallower Molded-in Heelside Fin
- Outer Molded-in Stabilizers
- Subtler 3-Stage Rocker
- Satin Flex
- Monoque Construction
- Layered Glass
- Lifetime Warranty





MURRAY

SIZES: 6 / 7, 8, 9, 10, 11, 12, 13 / 14

The Murray boot is a super-lightweight high-end boot with customizable support, flex and fit. It features our all-new linerless construction that eliminates unnecessary bulk and weight. Water drains in the sides, footbed and toe keep the weight down during riding. The progressive rate plastic springs absorb the impact of landing on the flats without affecting edge-to-edge response. The springs also allow us to bring you closer to the board by taking that cushioning function out of the footbeds. The all-new lightweight footplate chassis also keeps you centered on the board no matter what size you wear. The industry-first removable plastic supports allow you to customize the boot to your preferences. If you like a stiffer flex and more ankle support, slide them in and seal them in with the special 3M Dual Lock velcro. You can also customize the fit with CustomFit footbed riser pads. If you have a low-volume foot or prefer a super-slug fit, just slide them under the molded footbeds. And the V-shaped elastic toe flares absorb the impact of big airs without hurting your toes.

Features:

- Dual Quick Cinch lace zones
- New durable lasted linerless construction
- HyperShock suspension plate
- Customizable support and flex with removable stiffeners
- Customizable fit with removable footbed riser pads
- Monomesh drain panels
- impact-resistant elastic mesh toe flares
- J-bar ankle pads
- lightweight baseplate
- Option 2 power strap



Grey

Boot Details



HyperShock Suspension Plate



Removable CustomFit Stiffeners



ERA

SIZES: Xsm, Sm, Mini md, Md, Md/Lg, Lg, XI, XXIXI, XXI

Have a narrow foot, flat foot, or just like a tighter fit? Erik Ruck designed a smaller volume fit with the comfort and ease of the original lace-up creation. This boot is a simple, lightweight performer from the same family of innovation as our other signature boots and at a more affordable value.

Features:

- Quick Cinch Rear Lace
- Neoprene sock construction
- Easy Entry Lycra Liner with wetsuit tape seams
- Option 2 power strap
- TPU stretch zone for safety
- Dual Density footbed
- 3D molded heel and tongue

Boot Details



Option 2 Power Strap



ATLAS

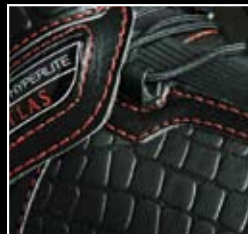
SIZES: Xsm, Sm, Mini md, Md, Md/Lg, Lg, XI, XXIXI, XXI

The Atlas is the stiffest boot in the line. It is our classic closed toe, with proven support and performance. The perennial favorite, we have brought the 3DS back with a new neoprene sock construction, colors and materials. This boot fits super snug but the TPU stretch zones allow your feet to release when they should. This is a durable and hard-charging high-performance classic.

Features:

- Closed toe
- Quick Cinch Front Lace
- Neoprene sock construction
- Easy Entry Lycra Liner with wetsuit tape seams
- Velcro top power strap with TPU stretch zone
- TPU stretch zone for safety
- Dual Density footbed
- 3D molded heel and tongue

Boot Details



Quick Cinch Front Lace

PROOF

SIZES: Xsm, Sm, Mini md, Md, Md/Lg, Lg, Xl, XXI

The Proof boot focuses on the use of lace zones and less overlay material to provide the most mobility in any of our pro-model boots. This boot blends support and lateral movement in a lightweight package. The Proof boot has all the locked-down feel you will need for a cab 900, with the freedom required for a smooth, poked out, frontside Indy. Stainless steel eyelets make for an easy transitioned adjustment. A rider can remove the bottom guide, cinch it as tight as they want, and instantly lock it back into place for a one-time modification. This eliminates half the work, as a rider can now just use the rear top lace guides to get in and out of the boot.

Features:

- Quick Cinch Side/Rear Lace
- Neoprene sock construction
- Easy Entry Lycra Liner with wetsuit tape seams
- Option 2 power strap
- TPU stretch zone for safety
- Dual Density footbed
- 3D molded heel and tongue

Boot Details



Side Lace Lock



FOCUS

SIZES: Mini, Std, XL

The Focus boot is our best fitting and easiest entry adjustable boot. It opens wide and has a true floating tongue for supreme adjustability. The Toe Tension System eliminates heel lift by pulling your heel back into the pocket for a locked-down fit. And the thickly-padded fully articulating cuff allows the upper part of the boot to flex with your leg. The new J-bar pads wrap around the ankle bones for a snug fit and eliminate heel lift.

Features:

- Wide Open Easy Entry
- HyperPlush Rear Flex Zone
- J-bar Ankle Pads
- Toe Tension System
- Fully Articulating Cuff
- True Floating Tongue
- True Fit Dual Top Power Straps
- Quick Cinch Lower Lace Zone
- TPU stretch zone for safety
- Dual Density Footbed

Boot Details



Durable Plastic-Reinforced Lace Eyelets





REMIX

SIZES: Mini, Std, XL

The Remix boot is an all-new design for a very supportive but easy-to-get-into adjustable boot. It has dual lace zones like much more expensive boots, but the plushness you come to expect from an open-toe. The tongue has a neoprene stretch panel on the medial side where feet are thicker and need the adjustability, but the tongue is fixed on the lateral side where you need the support to land big airs. The new J-bar pads wrap around the ankle bones for a snug fit and eliminate heel lift.



Black

Features:

- Wide Open Easy Entry
- HyperPlush Rear Flex Zone
- Dual Quick Cinch Lace Zones
- Plastic-Reinforced Eyelets
- Flex Zone notch
- Semi Floating Tongue
- TPU stretch zone for safety
- Reinforced pull straps

FOUNDATION

Sizes: KIDS, Mini, Std, XL

The Foundation is one-cinch adjustability designed for entry-level riders encountering the water's terrain for the first time. It has been updated this year with new softer EVA foam for plush comfort and easy flex. It's very easy to get into and the edges of the toe have been wrapped in soft textile for a nice feel against the foot. The new rear flex zone eliminates hard edges or pinch points against the back of the leg. New riders will appreciate the simple role of the Foundation – the building block of progressive riding.

Features:

- Wide Open Easy Entry
- Single Quick Cinch Lace Zones
- Plastic-Reinforced Eyelets at the top
- Fully Articulating Cuff
- Rear Flex Zone
- Semi Floating Tongue
- TPU stretch zone for safety
- 3D molded EVA heel and tongue
- Reinforced pull straps

VARIO

Sizes: Mini, Std, XL

The Vario is an entry level boot with high end features. Utilizing a three piece construction with a pre formed EVA heel, the Vario gives support and comfort without the big price tag. The floating toe allows for a wide array of foot sizes making it the one boot for the entire boat. The Vario is even more comfortable for 2008, with new softer EVA foams for the heel and tongue, and a rear flex zone to eliminate pinch points against the back of the leg.

Features:

- Elastic Quick Cinch Front Lace
- Fully Articulating Cuff
- Rear Flex Zone
- Heel Bumps

MENS BOOTS SIZING

We advise riders to try on your boot at a local authorized Hyperlite retailer before making a purchase. Our footwear continues to become more customized to a specific arch, stiffness, length, width, and ability. This chart is only a guideline.

	ERA • ATLAS • PROOF								FOCUS • REMIX • FOUNDATION • VARIO			
	XS	S	MINI-MD	MD	MD-LG	LG	XL	XXL	MINI	STD	XL	
U.S.	2-4	4-5.5	5-7	7.5-9.5	9-10	9-11	11-13	13-15.5	U.S.	3-7	6-11.5	10-15.5
U.K.	1.5-3.5	3.5	4.5-6	6.5-8.5	8-9	8-10	10-12	12-14.5	U.K.	5.5-6	5.5-10.5	9-14.5
Europe	35-37	37-39.5	39-40	40-42.5	41-43.5	42-44	44-46	46-50	Europe	34-40	39-45.5	42.5-50
cm	21-23	23-24	23.5-25	25.5-27.5	27-28	27-29	29-31	31-33.5	cm	21.5-25	25.5-29.5	27-33.5

SYN

SIZES: Xsm, Sm, Mini md, Md

The Syn is a high-performance closed toe for experienced riders, but it also has high-style feminine detailing. Overall comfort and performance were the goals in this design. The Quick Cinch lower lace zone, and BOA system incorporated with the TPU Option 2 strap make up one of our most technical boots. We also used unique graphic techniques to set this boot apart, like subtle white-on-white printing and pink contrast stitching. Combined with an elastic closed toe design, the Syn boot is the complete package.

Features:

- Elastic Closed Toe
- BOA speed dial with Option 2
- Quick Cinch Front Lace
- Neoprene sock construction
- Easy Entry Lycra Liner with wetsuit tape seams
- TPU stretch zone for safety
- Dual Density footbed
- 3D molded heel and tongue

Boot Detail



Unique Graphic Detailing



BLUR

SIZES: Mini, Std

The Blur boot is our best fitting and easiest entry adjustable boot. It opens wide and has a true floating tongue for supreme adjustability. The Toe Tension System eliminates heel lift by pulling your heel back into the pocket for a locked-down fit. And the thickly-padded fully articulating cuff allows the upper part of the boot to flex with your leg. The new J-bar pads wrap around the ankle bones for a snug fit and eliminate heel lift.

Features:

- Wide Open Easy Entry
- HyperPlush Rear Flex Zone
- J-bar Ankle Pads
- Toe Tension System
- Fully Articulating Cuff
- True Floating Tongue
- True Fit Dual Top Power Straps
- Quick Cinch Lower Lace Zone
- TPU stretch zone for safety
- Dual Density Footbed

Boot Details



**Durable Plastic-Reinforced
Lace Eyelets**





EDEN

SIZES: Mini, Std

The Eden boot is an all-new design for a very supportive but easy-to-get-into adjustable boot. It has dual lace zones like much more expensive boots, but the plushness you come to expect from an open-toe. The tongue has a neoprene stretch panel on the medial side where feet are thicker and need the adjustability, but the tongue is fixed on the lateral side where you need the support to land big airs. The new J-bar pads wrap around the ankle bones for a snug fit and eliminate heel lift.

Features:

- Wide Open Easy Entry
- HyperPlush Rear Flex Zone
- Dual Quick Cinch Lace Zones
- Plastic-Reinforced Eyelets
- Flex Zone notch
- Semi Floating Tongue
- TPU stretch zone for safety
- Reinforced pull straps

Boot Details



Elastic Flex Notch



SYMBOL

SIZES: Mini, Std

The Symbol is one-cinch adjustability designed for entry-level riders encountering the water's terrain for the first time. It has been updated this year with new softer EVA foam for plush comfort and easy flex. It's very easy to get into and the edges of the toe have been wrapped in soft textile for a nice feel against the foot. The new rear flex zone eliminates hard edges or pinch points against the back of the leg. New riders will appreciate the simple role of the Foundation – the building block of progressive riding.

Features:

- Wide Open Easy Entry
- Single Quick Cinch Lace Zones
- Plastic-Reinforced Eyelets at the top
- Fully Articulating Cuff
- Rear Flex Zone
- Semi Floating Tongue
- TPU stretch zone for safety
- 3D molded EVA heel and tongue
- Reinforced pull straps

Boot Details



Fully Articulating Cuff

WOMENS BOOTS SIZING

We advise riders to try on your boot at a local authorized Hyperlite retailer before making a purchase. Our footwear continues to become more customized to a specific arch, stiffness, length, width, and ability. This chart is only a guideline.

SYN					BLUR • EDEN • SYMBOL		
	XS	S	MINI/MD	MD		MINI	STD
U.S.	2-4	4-5.5	5-7	7.5-9.5	U.S.	5-9	8.5-16
U.K.	1.5-3.5	3.5-5	4.5-6	6.5-8.5	U.K.	2.5-6.5	6-11
Europe	33.5-36	36-38	37.5-40	40.5-43	Europe	35.5-40.5	38.5-68.5
cm	21-23	23-24	23.5-25	25.5-27.5	cm	22-26	24.5-43.5



127cm

B-SIDE

Fins: 2 – 1.1 A-Wing

Our most advanced grom board to date. Linking two of our best selling shapes. This board combines the snap of the Apex series 3-stage rocker line with the edge hold down of the B-Side series.

Features:

- Subtle 3 Stage Rocker
- Concave Top Deck
- Tip to Tail Step Down Rail
- Cupped Rail
- Molded-in Fins
- Layered Glass
- Monocoque Construction
- Lifetime Warranty



125cm

STATE

Fins: 2 – 1.1" A-Wing

The State series is a shape that you don't have to learn how to ride. The features let a boarder determine their own style. This series is the building block to the rest of the high-end line.

Features:

- An asymmetric shape allowing a rider to stand higher up the wake on their toeside edge with increased leverage on their heelside rail.
- Deeper molded-in toeside fins set a harder cut, shallower molded-in heelside fins create a quicker release.
- Outer stabilizers create a more stable ride and help a rider recover from off unstable landings.
- A snappy 3-stage rocker with a full-length "V" bottom tunnel helps break up the water for cushioned landings.





119cm

109cm

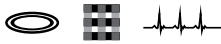
MOTIVE

Fins: 2 - 1.7" Maruca Poly Fins

The Motive is a board preferred by beginner/intermediate riders who like the flowing feel of the original free ride series. The Motive provides a mellower turn with smoother lift off the wake.

Features:

- The original molded-in fin creation designed by World Champion Shaun Murray.
- The outer fins act as a stabilizer for new riders requiring a solid ride into the wake.
- Advanced riders prefer the molded-in fins for a stronger rail into the wake.
- Smooth, predictable, fast continuous rocker line covers the spectrum of abilities.
- A "V" bottom tunnel lets additional water flow thru for greater traction and stability on landings.



128cm

119cm

109cm

DEVINE

Fins: 2 - 1.7" Maruca Poly Fins

With a mellow, continuous rocker and soft molded-in fins, the Devine series is designed for smooth grace in the air. These features, combined with a softer ladies-specific flex, make it the perfect board for first-time and intermediate riders.

Features:

- The original molded-in fin creation designed by World Champion Shaun Murray.
- The outer fins act as a stabilizer for new riders requiring a solid ride into the wake.
- Advanced riders prefer the molded-in fins for a stronger rail into the wake.
- Smooth, predictable, fast continuous rocker line covers the spectrum of abilities.
- A "V" bottom tunnel lets additional water flow thru for greater traction and stability on landings.
- Ladies specific "Satin Flex" allows for a slightly softer board flex.



KIDS UNITE BOOTS

One Size Fits all

Just like big brother's and sister's set up, Jr. now has a boot designed specifically for a smaller foot, using all the innovative construction methods and high-end materials but in a smaller package built just for them. Now the youth of today can gear up to become the pros of tomorrow.

Features:

- Wide Open Easy Entry
- TPU stretch zone for safety
- 3D molded EVA heel and tongue
- Rear Flex Zone



FOUNDATION



SYMBOL



CATALYST

Fins: 2 – Shank fins

How do you improve the winningest shape in wakeskate history? Easy, enlist the help Scott Bouchard. That's right for 2008 Butch and Grubb teamed up to shape everything Grubb was looking for. The new and improved Catalyst series starts with a blended 3-stage rocker line to generate more speed into the wake. Butch built a wider overall profile for increased surface area to give Grubby the extra wake-to-wake pop he wanted. To ensure the ride was not too loose, however, the pair designed dual base channels for tighter edge hold into the wake. Finished off with more pronounced concaves and a hybrid EVA / grip tape top, the Catalyst is built to win another generation of titles.

Features:

- Shaped by Butch
- EVA / Griptape Blended Top
- Wide Profile
- Deeper Top Concaves and Kicktail
- Blended 3-Stage Rocker
- Dual Tip/Tail Channels
- Layered Glass - Lifetime Warranty



110cm

114cm



VINYL

108cm

Fins: 2 – Shank fins

Coming off the best season of his young career, it's was only fitting that Brandon Thomas have a board to call his own. The 108 Vinyl is just that, everything BT has wanted and then some. Almost two years in the works, the Vinyl takes design elements from all of BT's favorite skates and combines them into one. Overall, the Vinyl has a wider profile to create pop and accommodate for a bigger foot. A subtle concave and die-cut grip tape top complement the board's over all shape. Throw in a new blended 3 - Stage rocker line and dual tip/tail channels and you have a skate built for performance. The Vinyl comes in one size, 108, and ships with two aluminum shank fins.

Features:

- Die Cut Griptape Top
- Mellow Top Concaves
- Wide Overall Profile
- Blended 3-stage Rocker
- Dual Tip/Tail Channels
- 4 Internal Core Weights

108cm

CATALYST 2.0

Fins: 2 – Shank fins

The Catalyst 2.0 is a more traditional skate style concave kicktail blend. The magic weight of our high-end skates is around eight pounds, but it's where the weight is dispersed that makes the big difference. The 2.0 is constructed with steel rods running the length of the board, which improve the rotation on flip tricks. A softer radius near the edge prevents the board from getting hung up in the water when a deck is most prone to – during shuv-it tricks.

Features:

- Grip tape top
- Nylon base



141cm

PHRICTION

Fins: 2 – Disorder fins

The Phriction is a pro-model performance on a budget. New for this year is its E Core construction, which means a sealed wood deck for no more warping or cracking like traditional wood decks. Combine this with a radiused sidewall and our super tacky pad material inspired by pro-model concaved decks, and you have the perfect fit. It was designed by Scott Byerly, Brian Grubb and Brandon Thomas.

Features:

- E core
- Black EVA Pad
- Pronounced Kicktails
- Die Cut Logo



108cm

113cm

117cm

SCAPE

Fins: 2 – Disorder fins

The Scape series has the traditional, nine-ply wood construction for that classic snap and feel on the water. The Scape is an inexpensive, wood core deck for skaters looking to take the drop for the first time. The Scape is designed with a similar rocker line and traction pad as some of our high-end decks for the most pop and control off the water. It's bootless freedom of expression at our most affordable value.

Features:

- Grey EVA top
- Nine-ply wood construction
- Heat transferred base graphic



107cm

112cm

117cm



COEX

Fins: 1 – 2.1" Sure Thing

Our smallest performer has a stomp pad and a concave for more board control. Whether a rider is coming out of a bottom turn or snapping off the wake for a frontside air, the Coex is built for performance. The Coex features a rolled edge that starts softer and thicker at the tip. This gives the rider more of a surfy feel. Toward the tail, the edge rolls to a sharper traditional wake rail for added response. Even with its small stature, the Coex can still be surfed by bigger riders because it sits higher in the water than most other decks. Brian Grubb, Erik Ruck and Scott Byerly designed this short board with wakeskate maneuverability.

Features:

- Rolled Edge
- EVA Pad
- Die Cut Logo



4'4"

BROADCAST

4'9" Fins: 2 – 1.3" Disorder fins, 1 – 2.1" Sure Thing
5'6" Fins: 2 – 1.3" Disorder fins, 1 – 3.5" Black Ball

The Broadcast boards are crafted with more of a traditional wakeboard rail for a deeper ride in the water. They are preferred by riders that want to surf the way they wakeboard. They offer quicker reacting, harder edging with more of a centered weight distribution for a knifing style of bottom turn. Broadcast boards are available in two sizes with a fast rocker prepared for the endless summer.

Features:

- EVA Pad
- Die Cut Logo



4'9"



5'6"



LANDLOCK

Fins: 2 – 3.5" Black Ball

Our third design of the Landlock is geared for riders taking a slash for the first time, bigger riders, or just the toes on the nose mellowly transitioned, tail-heavy session. This fresh water creation features our softest/thickest rail with a concave top deck for that forgiving, laid-back soul turn.

Features:

- Rolled Edge
- EVA Pad
- Die Cut Logo



5'11"



JD WEBB

NON-USCG APPROVED

Sizes: XS - XXL

This competition pullover is made of 100% 4 way stretch material. Strategically placed foam panels allow for maximum range of motion. Made to the standards of JD Webb and the Hyperlite Pro Team this vest is so comfortable, you won't even know you've got it on.

Features:

- Non Coast Guard Approved – This is not a Life Jacket
- Made of 100% 4 Way Stretch Material
- Light Weight Pullover Allows Maximum Mobility
- Elastic Drawstring at Bottom With Loop For Boardshort Attachment



CATALYST

NON-USCG APPROVED

Sizes: XS - XXL

A non-restrictive design allows this lightweight, impact-resistant vest full mobility and ultimate comfort. Segmented front panels and thinner foam combine to make this one of the most comfortable vests on the market. A little longer than our standard vest with lower straps to ensure this one won't ride up on you.

Features:

- Non Coast Guard Approved – This is not a Life Jacket
- Segmented Foam Panels
- Mesh bottom drains
- 2 – Concealed 1.5" Straps



THE FIVE

NON-USCG APPROVED

Sizes: XS - XXL

A shorter cut version of the Catalyst series; this vest is built for the rider looking for maximum range of motion at the waist level. Key features include Glideskin throughout, segmented foam panels, a hidden belt and mesh drain panels.

Features:

- Non Coast Guard Approved – This is not a Life Jacket
- Segmented Foam Panels
- Mesh Bottom Drains
- 1 – Concealed 1.5" Strap



4PLAY

NON-USCG APPROVED

Sizes: XS - XL

Our first Non-Coast Guard Approved vest specifically for women – the sister to The Five. Key features include Glideskin throughout, segmented foam panels, a hidden belt and mesh drain panels.

Features:

- Non Coast Guard Approved – This is not a Life Jacket
- Segmented Foam Panels
- Mesh Bottom Drains
- 1 – Concealed 1.5" Strap



SIDE ENTRY

USCG APPROVED

Sizes: S - XXL

New in the Hyperlite line for 2008 is our Side Entry USCGA vest. This vest is as tech as they come. Features include Glideskin, hidden buckles, segmented foam panels, 4 way stretch material in all the right spots, an angled zipper and cutting edge artwork. You won't be lacking any style with this PFD.

Features:

- USCG Approved Type III Personal Flotation Device
- 2 Concealed 1.5" Straps
- Segmented Front Foam Panels For Maximum Mobility
- Mesh Bottom Drains



AGENT VESTS

USCG APPROVED

Special Agent – S, M, L, XL, XXL
Phoenix Agent – S, M, L, XL, XXL

The Agent series is a CGA vest with the stamp of approval among our top riders including Aaron Rathy. This vest is constructed with a unique 4-panel design which allows for freedom of motion in all directions while the dispersion of foam among the four panels allows for a thinner fitting vest. The side panels conform to a rider's ribs and with the segmented foam you can move like you weren't wearing a vest at all. What more could you ask for?

Features:

- USCG Approved Type III Personal Flotation Device
- 4 Panel Construction
- Segmented Foam Panels
- Independent Segmented Rib Panel
- 2 – Concealed 1.5" Straps
- Mesh Bottom Drains



MENS INDY

USCG APPROVED

Black/Red – S, M, L, XL, XXL
Black/Blue – S, M, L, XL, XXL

Our classic full bodied neoprene vest is the choice of the recreational rider to the seasoned professional. Great all around neoprene vest at an affordable price. Stylish and comfortable, this vest will leave you with gas money for the weekend.

Features:

- USCG Approved Type III Personal Flotation Device
- 2 – Concealed 1.5" Straps
- Segmented Foam Panels
- Mesh Bottom Drains



PROFILE SERIES

USCG APPROVED

Black/Pink – XS, S, M, L, XL
 Purple – XS, S, M, L, XL

The Profile Series offers women a custom fit without sacrificing mobility or performance. The only vest with built in cups, utilizes a wrap around torso-foam design maximizing comfort while having segmented foam panels for superior flexibility.

- Features:
- USCG Approved Type III Personal Floatation Device
 - Molded Chest Cups
 - One-Piece wrap around torso foam
 - Mesh Bottom Drains
 - 2 Concealed 1.5" Straps

WOMEN'S INDY

USCG APPROVED

Pink XS, S, M, L
 Blue XS, S, M, L

Full bodied traditional neoprene vest. Two panel design with an athletic cut.

- Features:
- USCG Approved Type III Personal Floatation Device
 - 2 Concealed 1.5" Straps
 - Mesh Bottom Drains

BOY'S INDY

Scaled down version of the popular Men's Indy vest. Full bodied neoprene construction in our traditional 2 panel design.

- (A) 4.0 Teen Indy – Chest 28-32 – USCG Approved Type III Personal Floatation Device
- (B) State Teen Indy – Chest 28-32 – USCG Approved Type III Personal Floatation Device
- (C) Youth (50-90 lbs) – USCG Approved Type III Personal Floatation Device
- (D) Child (30-50 lbs) - USCG Approved Type III Personal Floatation Device
- (E) Toddler (0-30 lbs) – USCG Approved Type II Personal Floatation Device



GIRL'S INDY

Scaled down versions of the popular Women's vests of the same name.

- (F) Youth (50-90 lbs) - USCG Approved Type III
- (G) Child (30-50 lbs) – USCG Approved Type III
- (H) Toddler (0-30 lbs) – USCG Approved Type II



KIDS UNITE

- Sizes:
- Youth - 50 to 90 lbs.
 - Child - 30 to 50 lbs.
 - Toddler - Up to 30 lbs.

Approval from the powers of the Guard at the most affordable value. A nylon constructed line - lower in price than the rest of the vests, but not in flotation. Easy to see in the water, bright yellow shoulder pads for a day at the lake fits youth up to 90 lbs.

- (I) Youth Features:
- USCG approved type III
 - Lightweight nylon shell
 - 2 – 1.5" wide straps
- (J) Child Features:
- USCG approved type III
 - 2 – 1" wide straps
 - Adjustable crotch strap
- (K) Toddler Features:
- USCG approved type II
 - 2 – 1" wide straps
 - Flotation head rest
 - Heavy duty zipper
 - Adjustable crotch strap



VEST SIZING

CHEST SIZE IN INCHES

MENS:

XS	28-32	XXL	48-52
SM	32-36	3XL	52-56
MD	36-40	4XL	56-62
LG	40-44	5XL	62-68
XL	44-48		

WOMENS:

XS	28-32
SM	32-36
MD	36-40
LG	40-44
XL	44-48

BOYS / GIRLS SIZING:

TEEN	28-32	CHEST SIZE IN INCHES
YOUTH	50 TO 90LBS	
CHILD	30 TO 50LBS	
TODDLER	UP TO 30LBS	

MEN'S UNIVERSAL SERIES:

SM/MD	32-40	CHEST SIZE IN INCHES
LG/XL	40-52	CHEST SIZE IN INCHES
SUPER XL	50-60	CHEST SIZE IN INCHES

WOMEN'S UNIVERSAL SERIES:

SM/MD	30-40	CHEST SIZE IN INCHES
LG/XL	40-52	CHEST SIZE IN INCHES





1. Bender Bag

Many of the same features as the Management Travel Bag, but in a weekender size. Fits most airplane overhead compartments.

2. Capital Backpack

Padded computer storage, CD/MP3 pocket, cell phone storage and the most volume of any Hyperlite backpack.

3. Wheelie Board Bag

Luggage wheels make dragging this monster a breeze and interior wet and dry pockets make for easy storage.

4. Management Wheelie Travel Bag

Wheels, extending pull arm, separate interior compartments and outside pockets for quick access make this the only bag needed for travel.

5. Team Board Bag

This bag comes equipped with backpack straps and a perfect slider to dream about. Buy it and find out what we are talking about.

6. Team Board Bag (Brown)

Equipped with a gear pocket big enough for your rope and handle with interior wet pocket for vest and a couple of cold ones.

7. Producer Board Bag

Offers everyday protection plus plenty of pockets and room for storage. Padded shoulder strap for carrying comfort.

8. Essential Board Bag

Blue & Red: Unpadded option for travel or a great gear bag for all your equipment.

9. Women's Producer Board Bag

A women's version of the Producer Bag with sick graphics designed by Rory "sir talks alot" Tollefsen.

10. Women's Essential Board Bag

Unpadded option for travel or a great gear bag for all your equipment.

11. Divine Backpack

Convenient smaller volume pack for gear or everyday use.

12. Gen M Backpack

Kids will love this backpack's multiple pockets; sized just for them.

13. Catalyst Wakeskate Bag

Interior mesh pocket for your stuff and a deluxe padded shoulder strap to make carrying a breeze.

14. Wakeboard Rubber Wrap

Basic protection for your board, because no board should be unprotected.

15. Wakeskate Rubber Wrap

Protect your investment with this innovative neoprene wrap.



MENS SIZE CHART

1. 2. STEP UP:	SIZE:	CM:
	SM	53.5-55.5
	MD	55.5-57.0
	LG	57.0-59.0
	XL	59.0-60.5

BOYS SIZE CHART

4. MOTIVE:	SIZE:	CM:
	SM/MD	50.5-52.0
	LG/XL	52.0-53.5

WOMENS SIZE CHART

3. KINK'D:	SIZE:	CM:
	SM	52.0-53.5
	MD	53.5-55.5
	LG	55.5-57.0

GIRLS SIZE CHART

5. DIVINE:	SIZE:	CM:
	SM/MD	50.5-52.0
	LG/XL	52.0-53.5

HELMETS BY **bern**

It was only logical that the two most innovative names in water sports and head protection team up to create an unmatched line of water lids. With our input and Bern's engineering we have created three helmets built for comfort and performance.

- Features:
- Brock Foam™ is exclusive to Hyperlite by Bern helmets. Brock is a light weight foam that allows moisture and air to circulate through it in any direction without the risk of absorption. Brock Foam is also very resilient and returns to its original shape after impact, thus offering protection for multiple impact applications.
 - Sink Fit is a unique fit and feel featured in all Hyperlite by Bern Helmets. This construction allows the helmet to ride at a low profile for a better fit and feel.
 - Ear Protection is an additional feature to all Hyperlite by Bern Helmets. With a removable snap system, these soft conforming ear flaps offer maximum protection for high speed falls.
 - Adjustable Chin Strap allows for a wide array of head shapes and sizes.
 - Ladies Specific Sizing is offered in the Kink'd line of helmets. With sizing different than any of the male helmets and softer lines around vents and drain holes, this is a helmet truly built for a woman.

MENS TEES



HARD BLACK

WHITE WASH

HARD BLACK

WHITE WASH

Empire tee
S, M, L, XL, XXL

Statement tee
S, M, L, XL, XXL

Stacked tee
S, M, L, XL, XXL

Circle tee
S, M, L, XL, XXL



WHITE WASH

HARD BLACK

HARD BLACK

SANDSTONE

Script tee
S, M, L, XL, XXL

Flight tee
S, M, L, XL, XXL

Scoop tee
S, M, L, XL, XXL

Bkwrds tee
S, M, L, XL, XXL

WOMENS TEES



HARD BLACK

SOFT PINK

HARD BLACK

Eden tee
XS, S, M, L, XL

Vine tee
XS, S, M, L, XL

Dot tee
XS, S, M, L, XL

Flora tee
XS, S, M, L, XL

Hy tee
XS, S, M, L, XL

HATS



New Era Imperial
SIZES: 7 1/4 7 3/8 7 1/2 7 3/4

New Era Stitch
SIZES: 7 1/4 7 3/8 7 1/2 7 3/4

Team
SIZES: S/M, L/XL

Tag
SIZES: S/M, L/XL

Kids
ONE SIZE FITS ALL

Icon
SIZES: S/M, L/XL

Catalyst
SIZES: S/M, L/XL

**MENS & WOMENS
JACKETS & HOODIES**



SPRITE

MENS GRAFFITI HOODY
S, M, L, XL, XXL



DIGGER

MENS BOAT JACKET
S, M, L, XL, XXL



STARGAZER

**WOMENS BUTTERFLY
FULL ZIP HOODIE**
XS, S, M, L, XL

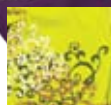
WOMENS SHORTS



Eyes Short
1,3,5,7,9,11



Symbol Short
1,3,5,7,9,11



SPRITE

Ivy Short
1,3,5,7,9,11



HARD BLACK

Fly Short
1,3,5,7,9,11

MENS SHORTS



CHOCOLATE

Imperial Short
28,30,32,34,36,38



SANDSTONE

Asym Short
28,30,32,34,36,38



LEMON LIME

Murray Short
28,30,32,34,36,38



LINCOLN

Collage Short
28,30,32,34,36,38



HARD BLACK

Graffiti Short
28,30,32,34,36,38

LENGTH - SERIES CM	TOTAL SURFACE AREA INCHES	TIP / TAIL WIDTH INCHES	CENTER WIDTH INCHES	ROCKER STYLE / HEIGHT INCHES	STANCE OPTIONS INCHES	WEIGHT RANGE POUNDS
WAKEBOARDS:						
138 Sub VI	784"	11"	16.5"	Adrupt Continuous - 2.6"	18" - 24"	145 lbs. and up
142 Sub VI	807"	11.1"	16.6"	Adrupt Continuous - 2.7"	18" - 24"	155 lbs. and up
135 Murray	797"	11.1"	17"	Dual - 2.8"	18" - 24"	Up to 175 lbs.
140 Murray	835"	11.2"	17.2"	Dual - 2.8"	18.5" - 24.5"	160 lbs. and up
145 Murray	876"	11.4"	17.4"	Dual - 2.8"	19" - 25"	165 lbs. and up
131 B-Side	764"	11"	16.75"	Blended 3-Stage - 2.55"	17" - 23"	Up to 155 lbs.
136 B-Side	805"	11.2"	17"	Blended 3-Stage - 2.65"	18" - 24"	140 lbs. and up
141 B-Side	846"	11.3"	17.25"	Blended 3-Stage - 2.75"	19" - 25"	160 lbs. and up
132 Era	750"	9.5"	16.9"	Subtle 3-Stage - 2.8"	17" - 23"	Up to 160 lbs.
137 Era	788"	9.55"	17"	Subtle 3-Stage - 2.9"	18" - 24"	Up to 175 lbs.
142 Era	828"	9.6"	17.2"	Subtle 3-Stage - 3.0"	18" - 24"	165 lbs. and up
130 Imperial	775"	9.8"	17.6"	3 - Stage - 2.5"	17" - 23"	Up to 155 lbs.
135 Imperial	808"	10"	17.8"	3 - Stage - 2.6"	18" - 24"	Up to 145 lbs.
140 Imperial	890"	10.2"	18"	3 - Stage - 2.7"	18" - 24"	165 lbs. and up
135 Pulse	784"	11"	16.5"	Adrupt Continuous - 2.6"	18" - 24"	145 lbs. and up
139 Pulse	807"	11.1"	16.6"	Adrupt Continuous - 2.7"	18" - 24"	155 lbs. and up
143 Pulse	840"	11.3"	16.7"	Adrupt Continuous - 2.8"	19" - 25"	165 lbs. and up
132 Tribute	750"	11.5"	16.5"	Adrupt Continuous - 2.46"	17" - 23"	Up to 160 lbs.
137 Tribute	790"	11.7"	16.75"	Adrupt Continuous - 2.55"	18" - 24"	Up to 175 lbs.
143 Tribute	831"	11.8"	17"	Adrupt Continuous - 2.64"	19" - 25"	165 lbs. and up
131 Premier	741"	10.5"	16.5"	Subtle 3-Stage - 2.5"	17" - 23"	Up to 155 lbs.
136 Premier	784"	10.7"	16.7"	Subtle 3-Stage - 2.6"	18" - 24"	140 lbs. and up
141 Premier	818"	10.8"	16.8"	Subtle 3-Stage - 2.7"	19" - 25"	160 lbs. and up
132 Apex	735"	9.6"	16.4"	Subtle 3-Stage - 2.5"	17" - 23"	Up to 160 lbs.
137 Apex	764"	9.7"	16.6"	Subtle 3-Stage - 2.6"	17" - 23"	Up to 175 lbs.
142 Apex	805"	9.8"	16.8"	Subtle 3-Stage - 2.7"	18" - 24"	165 lbs. and up
147 Apex	843"	9.8"	16.9"	Subtle 3-Stage - 2.8"	19" - 25"	165 lbs. and up
130 State	738"	10.1"	16.4"	Subtle 3 - Stage - 2.5"	17" - 23"	Up to 155 lbs.
135 State	780"	10.3"	16.8"	Subtle 3 - Stage - 2.6"	18" - 24"	145 lbs. and up
140 State	823"	10.5"	17"	Subtle 3 - Stage - 2.7"	18" - 24"	160 lbs. and up
145 State	852"	10.5"	17.1"	Subtle 3 - Stage - 2.8"	19" - 25"	165 lbs. and up
128 Motive	717"	9.2"	16.3"	Continuous - 2.5"	16" - 22"	Up to 145 lbs.
134 Motive	759"	9.3"	16.6"	Continuous - 2.6"	17" - 23"	Up to 175 lbs.
140 Motive	803"	9.4"	16.8"	Continuous - 2.7"	17" - 23"	155 lbs. and up
132 Syn	735"	9.6"	16.4"	Subtle 3 - Stage - 2.5"	17" - 23"	Up to 160 lbs.
137 Syn	764"	9.7"	16.6"	Subtle 3 - Stage - 2.5"	17" - 25"	Up to 175 lbs.
131 Blur	741"	10.5"	16.5"	Subtle 3-Stage - 2.5"	17" - 23"	Up to 155 lbs.
136 Blur	784"	10.7"	16.7"	Subtle 3-Stage - 2.6"	18" - 24"	140 lbs. and up
132 Opal	735"	9.6"	16.4"	Subtle 3-Stage - 2.5"	17" - 23"	Up to 160 lbs.
137 Opal	764"	9.7"	16.6"	Subtle 3-Stage - 2.6"	17" - 23"	Up to 175 lbs.
125 Eden	697"	9.9"	16.2"	Subtle 3 - Stage - 2.4"	16" - 22"	Up to 130 lbs.
130 Eden	738"	10.1"	16.4"	Subtle 3 - Stage - 2.5"	17" - 23"	Up to 155 lbs.
135 Eden	780"	10.3"	16.8"	Subtle 3 - Stage - 2.6"	18" - 24"	145 lbs. and up
109 Divine	602"	8.8"	15.2"	Continuous - 2.1"	11" - 17"	Up to 95 lbs.
119 Divine	675"	9"	15.6"	Continuous - 2.3"	12" - 18"	Up to 105 lbs.
128 Divine	717"	9.2"	16.3"	Continuous - 2.5"	16" - 22"	Up to 145 lbs.
127 B-Side	704"	9.7"	16.3"	Subtle 3 - Stage - 2.4"	16" - 22"	Up to 135 lbs.
125 State	697"	9.9"	16.2"	Subtle 3 - Stage - 2.4"	16" - 22"	Up to 130 lbs.
109 Motive	602"	8.8"	15.2"	Continuous - 2.1"	11" - 17"	Up to 95 lbs.
119 Motive	675"	9"	15.6"	Continuous - 2.3"	12" - 18"	Up to 105 lbs.
FLEXBOARDS:						
139 Roam	823"	Round Nose	15.1"	Adrupt Continuous - 2.7"	18.5" - 24.5"	145 lbs. and up
144 Roam	856"	Round Nose	15.1"	Adrupt Continuous - 2.8"	20" - 26"	160 lbs. and up
WAKESKATE:						
110 Catalyst	622"	11.1"	16.1"	3 - Stage - 2"		
114 Catalyst	651"	11.2"	16.3"	3 - Stage - 2.1"		
108 Vinyl	628"	11.2"	16.6"	3 - Stage - 1.9"		
107 Catalyst 2.0	591"	10.7"	16"	3 - Stage - 2.1"		
108 Phricion	594"	11"	15.4"	3 - Stage - 2.1"		
113 Phricion	625"	11.1"	15.5"	3 - Stage - 2.1"		
117 Phricion	652"	11.2"	15.6"	3 - Stage - 2.2"		
107 Scape	589"	10.4"	15.3"	3 - Stage - 2.1"		
112 Scape	620"	10.5"	15.4"	3 - Stage - 2.1"		
116 Scape	647"	10.6"	15.5"	3 - Stage - 2.2"		
WAKE SURFBOARDS:						
132 Coex	839"	Pin Tail	20.8"	2.4" Tip & 5 Tail		
144 Broadcast	896"	Pin Tail	20.8"	2.9" Tip & 8 Tail		
167 Broadcast	1061"	Pin Tail	21.3"	3.3" Tip & 10 Tail		
180 Landlock	1168"	Fish	20.4"	3.3" Tip & 2.4 Tail		



Accurate

L I N E S

SINCE THE BEGINNING, ACCURATE LINES HAS LED THE WAY IN EVA HANDLE GRIP INNOVATION & COMFORT. THIS YEAR IS NO EXCEPTION WITH A FULL RANGE OF PRE-FINGERED AND DUAL DENSITY GRIPS. FOR 2008 ACCURATE IS PAVING A NEW ROAD WITH A STELLAR NEW LINE OF EVA WAKEBOARD HANDLES, LINES AND PACKAGES.

CATALYST & PROOF CARBON SERIES

Two carbon designs with less inside volume and a wider radiused sidewall. The perfect fit for any skate/wake enthusiast.

FEATURES:

- 16.5" length handle grip, with larger handle side radiuses at either end of the handle.
- The sides of this new shaped handle are wrapped with 4mm thick EVA for added riding and handle pass comfort.
- Less volume – less to rotate.
- Die cut EVA handle grip
- High strength clear coat finish

CATALYST FEATURES:

- 4mm Dual Density surface EVA
- Three ridge dual density EVA grooves
- Brain Grubb design

PROOF FEATURES:

- Pre Finger Curved Dual Density EVA
- 4mm Side EVA
- 100% Carbon Fiber

ZERO-G CARBON

Part of the lightweight carbon collection that started it all.

FEATURES:

- 15.7" handle length
- 5mm thick die cut EVA grip
- High strength clear coat finish

CARBON HANDLE ROPE ONLY

All 2008 Accurate Carbon handles will be sold as a straight option only. For those who prefer the "T" or "V" wrap options, the tails will be sold separately

MURRAY ARS HANDLE

Shaun Murray's signature handle built with a new, popular squared off dual density EVA grip.

FEATURES:

- 4mm thick die cut EVA grip
- squared off dual density EVA
- ARS (Anti-Roll System) equipped
- 15" length offered in straight, "T" or "V" options

PODIUM ARS HANDLE

Rusty Malinoski's signature handle featuring a memory foam core with an EVA coating. You have to feel this handle to appreciate it.

FEATURES:

- 3mm memory foam core
- ARS (Anti-Roll System) equipped
- 15" length offered in straight or "T" options





PRIME ARS HANDLE

The popular Premier handle has been renamed for 2008. The Prime consists of the same construction as the Premier handle we have grown to love

FEATURES:

- 4mm thick die cut EVA grip
- Dual density EVA strips
- ARS (Anti-Roll System) equipped
- 15" length offered in straight or "T" options



EXODUS ARS HANDLE

A slightly thicker EVA grip for those who prefer a softer handle

FEATURES:

- 5mm thick die cut EVA grip
- Two layered EVA dual density handle grip, for a super soft, yet tacky feel
- ARS (Anti-Roll System) equipped
- 15" length offered in straight or "T" options

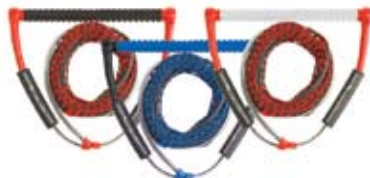


VOODOO ARS HANDLE

20% thicker EVA for those who prefer a bigger grip

FEATURES:

- Softer/thicker seamless EVA grip
- ARS (Anti-Roll System) equipped
- 15" length offered in straight or "T" options



ENDURE HANDLE

Accurate's version of the traditional rubber grip wakeboard handle

FEATURES:

- 15" length offered in straight or "T" options
- Strung with ultra spectra like the rest of our signature handles

VIVID HANDLE WITH 65' MAINLINE

EVA handle and mainline designed specifically for women. Save your money for boat gas and buy the handle and mainline as a package

HANDLE FEATURES:

- 15" handles available in straight or "V" options
- Color coordinated package so you can look your best on the water
- 3mm die cut EVA grip
- Black pencil floats

MAIN LINE FEATURES:

- 100% pure spectra fiber
- 65' total length with 3 - 5' sections
- Available in pink or blue



AERIAL HANDLE WITH 70' AERIAL LINE

HANDLE FEATURES:

- 15" handle in T, V or straight options
- Medium firm knobby machined EVA grip
- 6" foam floats
- Handle strung with Dyneema rope
- 6" finger protector end caps
- Handle colors: black, blue, white

MAINLINE FEATURES:

- 24 strand Tensilon™ outer jacket
- 100% dyneema core
- Non stretch
- 70' total length mainline with 3 - 5' sections
- Asst. colors to match handle



APEX MOLDED EVA HANDLE WITH 60' 4-SECTION MAINLINE

The same handle features and color ways as the other Apex series without the Dyneema strung handle

MAINLINE FEATURES:

- Poly Ethylene 4 section mainline
- 60' total length mainline with 3 - 5' sections
- Available in red, white and blue

APEX DYNEEMA WITH 70' FUSE MAINLINE

Accurate's most affordable EVA package

HANDLE FEATURES:

- 15" handle in T, V or straight options
- Soft molded 5mm EVA grip
- Handle strung with Dyneema rope
- 6" finger protector end caps
- Available in yellow, silver, red and blue

MAINLINE FEATURES:

- 100% dyneema core
- Polyethylene outer braided jacket
- 70' total length mainline with 3 - 5' sections
- Available in aqua blue, cherry red and sterling silver

REIGN HANDLE WITH 4 SECTION MAINLINE

The EVA alternative features a super tacky 15" TPR handle

FEATURES:

- 15" colored rubber grip
- 9" pencil floats
- Includes a 60' Poly-E 4 Section Mainline
- Available in silver, yellow and blue



80' TRACER CABLE

FEATURES:

- GLOWS IN THE DARK (requires charging by a light source i.e. headlights, flashlight, interior light, etc.)
- Urethane cable coating
- Snag free, smooth outer surface
- 80' total length with 3 – 5' sections



80' A-LINE SERIES

FEATURES:

- Stiff 12 strand braided dyneema core
- Urethane cable coating over the core
- Snag free, smooth outer surface
- 80' total length with 3 – 5' sections
- Available in metallic red/blue and white



70' X-LINE SERIES

Same characteristics as the A-Line at a 70' length

FEATURES:

- Stiff 12 strand braided dyneema core
- Urethane cable coating over the core
- Snag free, smooth outer surface
- 80' total length with 3 – 5' sections
- Available in blue, white and yellow



70' JACKET SERIES

The original, often imitated, tangle free spectra fusion jacket.

FEATURES:

- Closed cell neoprene inner core – floats like a cork
- 100% linear spectra outer core
- 70' total length mainline with 3 – 5' sections
- Available in yellow, black and red



70' FUSE SERIES

Performance that won't break the bank

FEATURES:

- 100% dyneema core
- polyethylene outer braided jacket
- 70' total length mainline with 3 – 5' sections
- Available in aqua blue, cherry red and sterling silver



65' ULTRA SPECTRA SERIES

Stiff, strong and lightweight – what more could you want?

FEATURES:

- 100% pure spectra fiber, super stiff – low stretch
- 65' total length mainline with 3 – 5' sections
- Available in black, yellow and blue



20' SURF ROPE

This is the perfect rope for wake surfing. A small handle for easy deep water starts along with foam floats strategically placed so you can find that sweet spot with ease. No more rope burn.

FEATURES:

- 10" molded EVA handle
- 4 foam floats in 2ft increments
- 20' total length with 1 – removable 5' section



BOAT BUMPERS

These inflatable bumpers are going to revolutionize boat bumpers as we know them. Simply pull the plug on the bottom to release the air and they flatten to the size of a pancake.

AVAILABLE IN BLACK OR BLUE CANVAS

- Small 6" x 18" • Medium 7.5" x 22.5" • Large 9" x 27"

ACCESSORIES

A: Skier down flag

B: 4', 5' & 6' rope bungee dock ties

C: 5' dog leash

D: 4', 5' & 6' webbing bungee dock ties

E: Trialer boat guides

F: Line winder

G: Carbon handle travel case with mainline caddy





PHOTOGRAPHY
JOEY MEDDOCK
RODRIGO DONOSO
SCOTT SCOGGIN
JOHN YAN

WWW.HYPERLITE.COM
WWW.ACCURATELINES.COM

HYPERLITE WARRANTY PROCEDURES VARY DEPENDING UPON COUNTRY OF PURCHASE.
CHECK YOUR WARRANTY CARD OR CALL HYPERLITE FOR FURTHER DETAILS.

HYPERLITE RESERVES THE RIGHT TO CHANGE SPECIFICATIONS WITHOUT NOTIFICATION.