



RADAR

*Two Thousand Eight*



We're no different than you are. Even the thought of going to the lake stirs up a frenzy of emotion that speeds heart rate and makes us giddy with excitement. At Radar, we know that the endless search for the perfect ride is nothing short of a spiritual trek. The difference is that we are fortunate enough to truly eat, sleep and speak waterskiing every day of the year. Believe us- we do not take this occupation lightly. What motivates us is making you a better skier and creating a better experience.

- The Radar Family



table of contents:

- |                     |  |
|---------------------|--|
| 2. intro            | 20. podium combos                        |
| 3. radar technology | 21. cipher/kids combos                   |
| 4. mpd              | 22. softgoods                            |
| 6. annex            | 24. ropes/handles                        |
| 8. senate           | 25. gloves                               |
| 10. theory          | 26. kids vests                           |
| 12. P6              | 28. tubes: anti-gravity/moon shot series |
| 14. lyric           | 29. tubes: flight deck series            |
| 16. Radar lineage   | 30. tubes: orbiter series                |
| 18. boot technology | 31. tubes: accessories                   |

# [Herb O'Brien]

Herb O'Brien is everything that is good about waterskiing. For over 50 years he has tinkered, shaped and created more innovation in towed water sports than anyone. The fact is, Herb moves quickly and the list is so deep, there's no true way to track his list of accomplishments. We do know that his designs have earned multiple World Records in slalom, trick and jump skiing as well as hundreds of professional titles. His accomplishments in wakeboarding have had equal success. Herb's theories on design have always become the law for other manufacturers. Herb's forward thinking keeps him living in the future, steps ahead of those around him. One thing is sure about that future.

There are a whole lot of ideas still up his sleeve.

**1956** - Began experimenting with ski design by modifying skis, changing bevels and sidecut (12 years old)

**1964** - Pressed first ski  
- Started O'Brien Skis

**1965** - Leroy Burnett sets a world record and wins the National Championship on the *O'Brien Competition*

**1971** - Started compression molding fiberglass skis

**1972** - Built Radar Lake (first man made lake with turn-around islands)

**1981** - Started HO Sports

**1982** - Revolutionized ski bindings with the *le boote'*  
- First boot with vertically mounted hardware

**1980's** - Designed Mach-1  
-World record

- Designed Turbo

- Designed Extreme

-World Record

- Designed jump and trick skis

-Multiple world records in both events

- Established *University of Waterskiing*

-Educating skiers all over the world

**1990's** - Created the industry of riding sideways

-Made the first compression molded foam wakeboard and later with a honeycomb and wood construction

- Designed VTX

- First Venturi Tunnel design

-2 US Pro Tour Titles

- Designed CDX

- Revolutionized ski construction

- Shaped ski designs transformed free skiing

-Took off the boots – with the first compression molded wakeskate

**2000's** - Won world championships with 100% carbon fiber/ machined core slalom skis

- Inland barrels were breaking everywhere with the first compression molded wakesurfer

- Snowboard season got extended with the first flexboard

-Water Ski Hall of Fame Award of Distinction

-Recognized as one of the "Most Influential People in Water Skiing" by WaterSki Magazine

-More Herb O'Brien products ridden worldwide than any other single designer

# SPIRIT AND DETERMINATION

Lightweight PVC machined core  
100% carbon graphite  
Clear coated nylon top  
Full top and bottom graphics  
Molded inserts for standard hole pattern  
Fully adjustable fin clamp  
Angle performance fin (Gold)  
Available in: 63.5, 65, 66, 67, 68, 69.5



top

base



[Annex]

The Annex enjoys a competition inspired design as the understudy of the MPD. Both skis follow specific Radar Technology and are actually made from the same mold. The Annex's single distinction from the MPD is it's internal construction based around a stabilizing polyurethane core for a higher dampening effect during deflection. With turning and balance ratings already at the top of the chart, our unique bevel design allows the skier to be in full control of tracking characteristics. The flex pattern and blend of carbon and fiberglass laminates are balanced perfectly under the tightest of tolerances.  
Available in: 63.5, 65, 66, 67, 68, 69.5



chris rossion the annex

top

base





Aggressive sidecut is the defining element of this ride. Upon inspection, the Senate looks as if two different skis were morphed into one. The tail of the ski has a dramatic inside radius exceeding that of a tournament ski, while the front is tame, with less aggressive lines. The forebody width is minimally wider than the MPD, aiding in consistent controlled speed in and out of the turn. Turn initiation, maintaining direction, and overall stability will never be an issue with the deep inside tail design. It achieves dramatic angle through the wakes. The Senate allows the skier to choose a level of aggressiveness within their personal comfort zone. Carbon fiber laminates will keep you shredding turns in the course or carving in the open water... with attitude!  
Available in: 65, 67, 69

[Senate]



trent finlayson with the senate



# [Theory]

The one-ski quiver.

The Theory is based on the core parameters of high-end Radar Technology including its bevels and 4-stage rocker. Surface area added into the sidecut dimension creates an enhanced "sweetspot" to stand on without compromising performance. The Theory is forgiving at slower speeds, yet sturdy enough for aggressive turns helping intermediate skiers improve quickly, taking performance up a few notches. The Theory is the epitome of performance and value redefining the shaped ski category.

Available in: 65,67,69



m a t t r i n i o n t h e t h e o r y





aaron jarkin on the p6



65

67

69

71

base

The P6 was designed to make skiing fun whether you're making a run across the lake or just getting onto the water for the first time. The wider forebody enables effortless deep water starts, while enhancing confidence in aspiring skiers. The bottom design incorporates twin channeled rails with a unique tunnel profile providing a very stable ride around the Radar Technology 4-stage rocker. The bevels complement a refined side cut allowing the ski to initiate and perform consistent turns. The P6 was designed to generate enjoyment for the recreational skier. This versatile ride is forgiving, predictable and well-suited for all water conditions.

Available in: 65, 67, 69, 71

[P6]



**[Lyric]**

A Woman's Best Friend  
 The Lyric's comfortable, predictable and easy ride is based on a women's specific flex pattern. The forebody shape allows us to run a softer flex pattern without creating drag, cutting through the wakes like butter. Narrow rails on either side of the tunnel bottom also give the ski superior tracking and stability. A smaller bevel in the forebody creates a supportive feeling and eliminates "hunting". The Lyric creates speed easily yet still makes tight, controlled turns. It also features Radar Technology bevels and 4-stage rocker. Fiberglass construction enables the ski to carry enough speed for the serious enthusiast.  
 Available in: 65



top

base

# [RADAR BOOTS]

**Change is coming** – a new way of thinking, new technology and a new connection to the ski. Boots built without pressure points or heel lift, that still deliver support where it matters the most – laterally. Our new process is solely based around creating the perfect model of a skier's foot in relation to the ski by using a *last*. This cavity is the building block - replicating pressure, stance and every aspect of a skier's foot. The last is used to build a sewn Composite/Synthetic Leather shell and a full wrap around thermo-formed liner. Streamlined construction conceived with a liner heated and custom formed to your foot with no traditional hardware or rubber tongues to rip. A boot that can't be categorized as either a rubber boot or a hard shell is about to change what you think you know about comfort and performance. With over 50 years of experience creating footwear devoted to the endless buoy, Radar Skis will have three new limited models available in the spring of 2007.

**[MPD]**  
Our high end boot will redefine what you think of your connection to the ski. A removable custom heat formed Intuition liner and Radar insole secure the foot inside a closed toe shell. Variable support panels control lateral stability from two independent locations. Double boot setups have Bi-level cuff heights creating freedom of movement for the back leg.

**[THE SOURCE]**  
After one ride in The Source, you'll be trying to remember what those old boots felt like. Your old foot cramping, hardware pinching, rubber ripping boots will be a distant memory. The heat formed Intuition liners and a closed toe will make you want to wear The Source to bed at night. The cuff is cut lower and the articulating shell flexes independently, both for mobility.

**[THE RAIL]**  
The Rail is an adjustable open toe boot with an articulating design. One piece construction means no overlay parts stacked over more rubber parts. Just comfort in an entry level boot.



# RADAR

# RADAR

# Boot Collective

UNMATCHED COMFORT · FLAWLESS PERFORMANCE

# Boot Collective

UNMATCHED COMFORT · FLAWLESS PERFORMANCE



RS-1



RAIL



SOURCE

RTP

For the past 25 years,  
since Herb O'Brien's original design,  
ski boots have remained relatively unchanged  
- until now.

Herb and the Radar Family are pleased to  
introduce the Radar Boot Collective. Our new  
series of boots provide skiers with a water ski  
specific design delivering comfort that lasts for  
your entire ski session. Using sophisticated  
construction technologies, carefully chosen  
materials and state-of-the-art, patent-pending  
technology, Radar Boots will forever change  
the way you connect to your ski.



# RADAR Boot Collective



**RS-1**  
The most advanced water ski boot to ever hit the water. A true hybrid of hardshell response and soft-boot forgiveness.



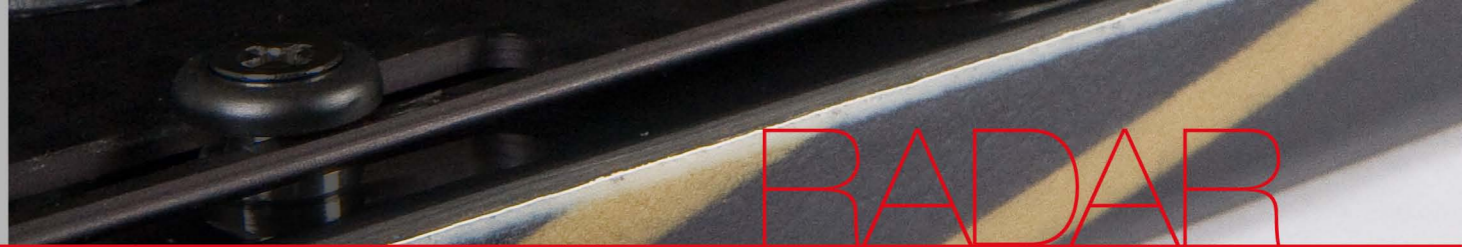
**RAIL**  
Ski hard AND ski all day. The perfect blend of luxury and performance.



**SOURCE**  
Pure Comfort. A ski boot has never felt so good on your foot.



**RTP**  
The adjustable rear toe that's as comfortable as your sandals.

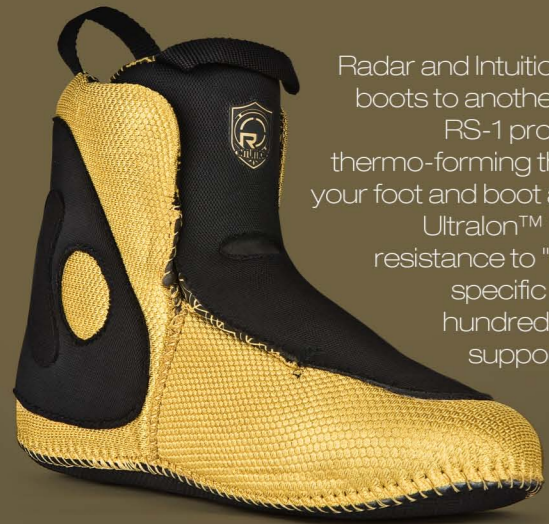


# RADAR QUANTIC MOUNTING SYSTEM

**THE CHASSIS** · Building boots right  
Your boots are the link between you, your ski, and the water, making them the most important part of your setup. Any movement or energy transfer moves through your feet for reaction from the ski. Radar boots were designed from the base of the foot for correct leverage. The first of it's kind, internal hard chassis for immediate edge response.

**PRO-FIT CHASSIS [RS-1]**  
A truly fitted, full wrapping anatomical chassis was created in our test lab for the most dynamic ride on the water. The Pro-Fit Chassis has strong side to side stability creating powerful edge control and dynamic response from the ski. The articulating cuff has progressive flexibility in the forward direction and holds you over your feet when rocked backwards.

**CUSTOM-FIT CHASSIS [Rail, Source and RTP]**  
Foot volume is a personal characteristic and the Custom-Fit Chassis was designed to secure any skier's foot in a solid position, allowing leverage to be transferred to the ski for performance and control. It's the optimal combination of support, stability and balance. Smooth flexibility from articulating cuff plates give easy knee movement fore and aft while the internal forefoot stabilizer plates send feedback into the ski.



**INTUITION LINER**  
Radar and Intuition Liners have taken the fit of your ski boots to another level. Intuition's ultra-light liner in the RS-1 provides a completely customized fit by thermo-forming the foam and molding it specifically to your foot and boot at the same time. Intuition's patented Ultralon™ foam has high quality "memory" and resistance to "packing out". This first ever water ski specific liner was developed through literally hundreds of prototypes to deliver reinforcing support where it's needed and full-contact comfort around the rest of the foot. See your Radar Authorized Dealer for custom heat molding.

**SEQUENCE BOOT PLATE**  
The Sequence Universal Plate mounts Radar Boots to the ski using the existing hole pattern from most manufacturers. The plate is fixed to the ski in the center Standard Fixed Mount holes and slides freely at the tip and tail using the Floating Plate Mounts, permitting the ski to flex independently from the binding system. Both front and rear boots can be rotated on the ski using the Pivoting Boot Mounts.



The Plate Centerline and the arrow mark on the toe of the boot determine the pivot chosen by the skier. You may micro-adjust overall fore/aft placement on the ski by using the plates offset alternate fixed mounting holes for smaller incremental movements for a fine tuned ride - not allowed by other manufacturer's plates.

- FLOATING PLATE MOUNT
- PIVOT FRONT BOOT MOUNT
- STANDARD FIXED MOUNT
- ALTERNATE MICRO-ADJUST FIXED MOUNT
- REAR TOE PLATE MOUNT
- PIVOT REAR BOOT MOUNT
- CENTERLINE
- FLOATING PLATE MOUNT



## [Podium]

Looking for a new pair of skis for the lake? Our Podium Combos offer a smooth, easy, predictable ride and are an excellent value for the whole family. Podiums can be used as both combo skis and as an entry-level slalom. They come standard with easy to use adjustable horseshoe bindings and threaded tip inserts to attach an optional stabilizer bar.

Podium Combos are available in:

59" for skiers up to 130 lbs. (stabilizer bar included)  
67" for skiers 110lbs and up. (stabilizer bar optional)

65"

59"



## [Firebolt]

Firebolt Jr. Trainers are undoubtedly the best way to teach kids how to ski. The detachable stabilizer bar helps maintain proper ski spacing and improves balance and control while learning. The wide profile and oversized surface area helps children start easier in deep water and boosts confidence while learning how to ski. The Firebolt package comes complete with our adjustable horseshoe bindings for a slide-in entry, and specially designed training rope.

46" for children up to 70 lbs.

Everyone should learn to water ski and the Cipher combos are the "must have" tool. These shaped combo skis have a wider tip profile to help with deep water starts and aid in developing stability. This wider profile makes them a great way to teach people to ski and creates newfound confidence in skiers of all levels. Ciphers still provide good challenges to the more aggressive skier by maintaining good edge hold and easy carving capabilities. Available in two sizes to provide fun for the whole family. Complete with threaded tip inserts for the optional stabilizer bar.

## [Cipher]

Cipher Combos are available in:  
59" for skiers up to 130 lbs.  
(stabilizer bar included)  
67" for skiers 110lbs and up.  
(stabilizer bar optional)



65"

59"



mpd padded slalom bag [A]  
available in: 63-66, 67-71

first layer neo sleeve [B]

radar backpack [C]

olive zip hoodie [D]  
available in: M, L, XL, XXL

flex fit hat [E]  
available in: S/M, L/XL

charcoal t-shirt [F]  
available in: M, L, XL, XXL

SOFTGOODS

- [MPD Custom Handle Series]**
- Three diameters to choose from: 0.940", 1.062" & 1.10"
  - Available in two widths (12" and 13")
    - 6" Finger Protectors
    - Pre-Stretched



- [Control Slalom Handles]**
- Offered in Straight, ARC (curved bar), and Elliptical (oval shaped bar)
    - 1" handle diameter
  - Available in two widths (12" and 13") (Elliptical in 13" only)
    - Full length finger protector end caps
    - Double braided rope for extra strength and durability
    - Pre-Stretched



- [Sure Grip Series]**
- Sure Grip Handle with Mainline
  - 13" handle length with "tacky grip"
  - Vinyl covered rope for durability
    - 6" Finger Protectors
  - Available in 5 or 8 section Mainline



- [Deep-V Series]**
- 15" EVA Deep-V Handle
  - 4' V-Bridle for easy deep water starts on a slalom ski
    - 15" EVA handle grip
  - Vinyl covered rope for durability
    - 6" Finger Protectors
  - Available w/ 5-Section Mainline



- [Global EVA Series]**
- 75' 13" EVA Global Water Sports Rope
  - 13" EVA Handle Grip
    - 6" Finger Protectors
  - Double Braided Handle
  - 70' Mainline



- [Global Series]**
- 75' 12" Global Water Sports Rope
  - 12" smooth tacky rubber gripped handle
  - Continuous 75' Mainline



- [Global Deep-V Series]**
- 75' 12" Global Deep-V Slalom Ski Rope
  - 12" smooth tacky rubber gripped handle
    - Vinyl covered bridle
  - 4 foot long V-Bridle for easy deep water starts on a slalom ski
  - Continuous 70' Mainline



- [MPD Switch 11-Section Mainline]**
- Tied take-off loops for easy shortening and less rope wear.
  - Identification Sleeve's
  - Additional non-switch section included.
  - Pre-Stretched



- [70 ft. Control Slalom Mainline]**
- Available in 8 and 10 sections
  - Color coded
  - Identification Sleeve's
  - Pre-Stretched

**[MPD]**  
Grip of the pros. Soft Aramid palm requires no break-in time. Have an immediate power grip with comfort from a full neoprene backside and pre-curved styling. This glove is durable and stays tight with an extra wide strap on the back of the hand.



**[The Lock]**  
Take longer sessions! Internal Aramid strap transfers pull from fingers to wrists for less fatigue. Innovative three-finger pocket design makes this glove simple to put on. External "grip dowel" on center pocket for superior holding power.

**[The Theory]**  
This glove follows the same style as the ski that carries the same name. The full amara construction is sure to keep you holding on to big pulls without compromising durability. Pre-curved fingers and deep seams for easy entry and fit.



**[The Bliss]**  
Ladies rejoice! A glove built for your size and hand shape. The conforming double layered amara palm material will be easy on blisters and the back-of-hand closure opens wide for effortless entry.

# [VESTS]



paige rini wears akemi vest



[CAMEO]



[ENCORE]

Wearing a great fitting vest means you won't notice you have it on. You'll find comfort and mobility in our adult sized neoprene flotation devices. Oversized neckline and armholes add comfort. Hidden belts and glide skin accents keep you in style.  
USCGA



[AKEMI]

USCGA  
Neoprene Construction  
Front Zip Entry

- Youth:**  
50- 90 lbs.
- Child:**  
30- 50 lbs.
- Toddler:**  
0- 30 lbs.



[HIDEO]





Radar's Inflatable Division is ready to take you for a ride that's out of this world! We're sure you will find something in the lineup that will keep you giggling and screaming with excitement all the way across the lake. Each tube is built with the finest materials for quality and durability.

- They include:
- Molded Neoprene Knuckle Guards
  - 840 Denier Fully Enclosed Nylon Cover
  - 30 Gauge PVC Bladder
  - Tow Attachment
  - All inflatable cushions are nylon encased

[LIFT OFF]  
76" X 76"  
3, 2, 1, Liftoff on this semi-round crowd pleaser. The square back adds stability in rough water or riding the whip. Full knee and elbow pads add comfort and side bumpers hold you in place. Up to 3 riders.

[ORION]  
72" Round  
At 6 feet in diameter, the Orion is big fun. Up to 3 riders will enjoy freedom on the water and comfort with full knee and elbow padding. The Orion is even big enough to take a nap on after a long day of riding.

[ASTRO]  
60" X 64"  
Ready for big air? Be the star of the lake on the Astro. The side bumpers keep 2 riders in the action on the whip or flying through space. The Astro's wedge shape makes it easy to climb back in the saddle after falling off.

# 2007 INFLATABLES



[AFTER BURNER]  
77" Round  
Less surface area = less friction = more speed!  
The concave base reduces surface tension and kicks up the fun a notch. Up to 3 riders will skim along the lake blasting off wakes, ignoring the laws of gravity.

[HOVER CRAFT]  
83" X 79"  
Float down the lake like you're riding on air. 3 directional rails on the base create lift and the tapered design makes this ride fully steerable. Cross the wakes at will, or follow the boat as you wish. The Hover Craft is under your command. Up to 2 riders.

[APOLLO 3]  
94" X 90"  
The Apollo was designed with additional space between the cockpits, giving extra head and elbow room. Independently formed back rests hold you in place for takeoff. Follow this spacecraft's nosecone shaped design into orbit around the lake.

[APOLLO 2]  
69" X 76"  
Ride in style on our pickle-fork designed 2 seater. The high-rise back rest gives support and the padded seat softens the ride. No need to have crazy driving to enjoy the Apollo Inflatables. They're even fun shooting straight down the lake.

# 2007 INFLATABLES

**[COSMO]**

54" X 54"

The Cosmo is an affordable one man ride ready for take off. From the smallest riders in the boat to the guy that wants to get crazy, the Cosmo is up to the challenge. One rider.  
\*420 denier nylon/webbing rope harness/exposed bladder

**[VORTEX]**

55" X 55"

The Vortex is packaged with its own 1700lb 1-person towrope. Slightly larger than the Cosmo, the small opening and deep well enhance the ride for up to 1 rider.

**[ZEPHYR]**

60" X 60"

A Zephyr is usually defined as something soft, but this tube should not be taken lightly. A classic shape at an affordable price. This whirling tube of fun has an inflatable cushion and handles for 1 rider.

**[UFO]**

72" X 72"

Float across the water on the UFO with its low friction concave bottom. This oversized round ride is fantastic for you and a friend. There are plenty of handles to be the pilot on board of your own Unidentified Flying Object.

**[SATURN]**

28" X 126"

Bounce down the lake laughing all the way. Our enlarged base adds stability for wiggling riders. The rider's tube is oval shaped, raising the seats for a more comfortable ride. Up to 3 riders



# INFLATABLE

# ACCESSORIES



**[60 FT 2.3K TUBE ROPE]**

- 2375lbs Tube Rope
- For Towing up to a maximum of two riders or 340lbs
- Special length, with neoprene float

**[60 FT 4.1K TUBE ROPE]**

- 4100lbs Tube Rope
- For Towing up to a maximum of four riders or 680lbs
- Special length designed for multi-rider tubes

**[DOCK TIES]**

- 4ft,5ft and 6ft nylon webbing bungee boat dock tie

**[ELECTRIC PUMP]**

This high pressure electric pump is especially designed for quickly inflating and deflating inflatable tubes and other structures up to full working pressure. Come's complete with universal adaptors & power cords