

"I look to Fly High Fat Sacs to weight  
my boat for the wake I need"

*Shawn Murray*  
4x World Champion



**FLY HIGH**  
FATSAC

**2008-2009 PRODUCTS**

Barefoot International & Fly High Wakeboarding Mfg. offers consumers a line of superior products developed through careful research and testing. As the rest of our competitors have been busy finding overseas suppliers to fulfill their needs, we have been steadily upgrading our capabilities in-house. Our booms, pylons, towers, Fat Sacs™ and other barefoot and wakeboarding products are specifically designed to provide added safety, convenience and improved performance without causing damage to your boat. We don't compromise safety nor ease of use for gimmick features. Barefoot International & Fly High Wakeboarding Mfg. is your assurance of the highest quality equipment available today.

P: 414-964-3668 / 800-932-0685 F: 414-964-5767 [www.fatsac.com](http://www.fatsac.com)

3879 N. Richards Street • Milwaukee, WI 53212



**Made in USA**

## Pro X Series Tower Extension

#W2927 / #W2931 / #W2932 (patent pending)

The new Pro X Series Tower Extension is the most extreme new product to hit the market. It fits all towers and allows riders to go bigger and land softer. It also helps you learn new tricks at slower speeds which will increase your confidence while reducing the punishment of crashing. Trying to land that first raley? Slow the boat to 18 mph and give it a rip. It quickly folds down entirely and can remain attached while your tower is collapsed, so there is no need to remove it prior to parking your boat on the lift.

W2927 - 2" or less tower diameter

W2931 - 2¼" - 2½" tower diameter

W2932 - MasterCraft X-Star and X-80 (2 7/8")



## Pro X Series Tower

#W2923

The Pro X Series Tower is completely universal and the only one constructed of stainless steel making it the strongest and most durable tower on the market. The Quick Release pins are user friendly and make stowing and setup of the tower a simple task. Just pull six pins and the tower folds down entirely allowing an easier fit into your garage and lift. This tower offers exclusive overhead crossbar engineering which locks it in and makes it as rigid as a factory installed tower. The crossbars of the tower act as an integrated board rack that will store anything from a slalom ski to a wake surf board. Black board pads and bungies included.

## Board Pads

#W2925

It ships with the black pads, but you can also customize the look of your tower with these color board pads.



You can use the crossbars of the tower to quickly store all of your equipment. The Pro X Series Tower is the only tower on the market designed with this in mind. The crossbars can accommodate anything from a single slalom ski to a wake surf board.



### Pro X Series Rolled Cage

#W2922

The Pro X Series Cage is a simple yet effective design. It's made of high quality 2" and 2.5" stainless steel and adjusts to fit any boat. Mount the arms to the front or back of the boat to give it a distinct look. It's fully collapsible as well.



### Monkey Bar

#W2920

The Monkey Bar is a version of the Pro X Series Cage which uses our traditional cable system attached to the bow of the boat for stability. Don't be fooled by it's simplicity, this tower is easy to install and performs like any other at a fraction of the cost.



### Pro X Series Rag Top

#W2924

The Pro X Series Rag Top is the perfect adjustable bimini that you can attach to a factory or extended pylon. Once it's removed, simply pull the quick release pins to fold it into thirds, making it easy to transport or store. Available in assorted colors.



### Pro X Series Board Rack

#W2906 / W2907

The Pro X Series Board Rack is designed to fit any tower or pylon and comes with arm extensions to accommodate wake surf boards. (W2906 - 2" or less O.D. pylons and towers / W2907 - greater than 2" O.D. pylons and towers)

### Rope Guide

#W912

The Rope Guide can be used with all Fly High towers and extended pylons with the exception of the X-Pole. It quickly attaches to the delron swivel and helps keep the rope off your racks and out of the boat.





**Stainless Steel Fly High**

#W2900

The original Fly High is still the only high quality stainless steel pylon on the market. It's the only pylon with a delron swivel at the top and at pylon height. The Fly High's superior strength and safety comes from our dual stainless steel cable system.

**V-Drive Pylon**

#W901v

The V-Drive Pylon is designed specifically for installation on v-drive boats. It utilizes two support arms, which make for a rigid design. This is the answer v-drive owners are looking for if they don't want to install a tower.



**X-Pole**

#W913x

The X-Pole is all aluminum, anodized black and made to fit 2.5" pylons. This monster is similar to the stainless steel Fly High but is one piece instead of two. It also has a poly carbonate sleeve inside to protect your factory pylon.

**Pro Ski Pylon**

#W411 / W412

The Pro Ski Pylon comes in two forms, fixed and adjustable. The fixed version of the pylon is 45" tall while the adjustable version can be set to a height from 34"-58". (W411 - adjustable height / W412 - fixed height)



**Quad Pod**

#W901

The Quad Pod Pylon is designed for riders who have boats without a factory installed pylon. It offers the same height advantage as other extended pylons and towers while the four braces make it extremely strong and safe to use.

**Bass Boat Pylon**

#W404

The Bass Boat Pylon is designed to utilize the seat mount of your bass boat. It can be quickly installed and removed and has two telescoping support arms that provide stability.



**Pro Deck Master Pylon**

#W400

The Pro Deck Master Pylon was designed to be fitted to the engine well of a boat where the surface may not be horizontal. It's design is simple yet effective, and the pylon itself installs in minutes.



**Ski Tow Hitch**

#W403

This pylon can be mounted to the transom of boats.



**Cable Pad**

#W506

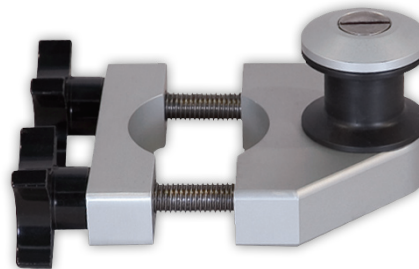
Replacement cable protector for you Fly High pylons.



**Delron Height Adjuster**

#W2902 / W2902-3

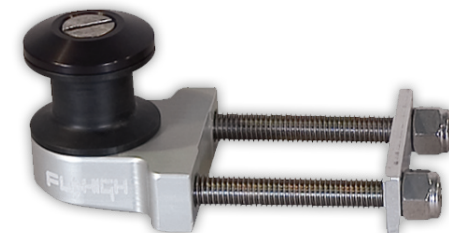
Fits our extended pylons allowing you to adjust the height of the attachment point for the rope. (W2902 for 2.5" pylons / W2902-3 for 3" pylons)



**Delron Pro Ski Swivel**

#W401

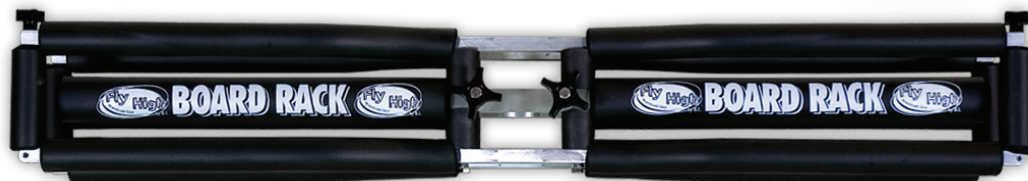
The Delron Swivel is a compact design and can be permanently mounted to any boat or jet ski.



**Board Rack**

#W906 / W906-3

The original Board Rack fits any pylon, the Monkey Bar and Cage towers. This heavy duty rack conveniently stores up to 4 boards. Keep from having to step over your equipment by stowing it up off the floor. (W906 for 2.5" pylons / W906-3 for 3" pylons)



**Pylon Case**

#W501

Our Pylon case is the best way to transport and store your extended pylon. You won't have to worry about the latch on the cable smacking your ankles when carrying the pylon with this thing.





**#W730**

Female Quick Connect Cap  
(use with W739)

**#W739**

Male Quick Connect Cap (use  
with W730)

**#W731**

Waley Plug



**#W732**

Garden Hose to Quick Connect  
Adapter

**#W733**

1" Barbed End

**#W734**

Tsunami Pump Adapter (comes  
with pump)



**#W735**

Perfect Union to Quick Connect  
Adapter

**#W736**

3/4" Flow-Rite to Quick  
Connect Adapter

**#W737**

3/4" Barbed End



**#W738**

Tsunami Pump Hose Adapter  
(comes with pump)

**#W740**

3/4" Straight Flow-Rite  
Connect

**#W741**

1" Straight Flow-Rite Connect



**#W742**

3/4" Elbow Flow-Rite Connect

**#W743**

1" Flow-Rite to Quick Connect  
Adapter

**#W744**

Check Valve System (prevents  
water spillage)



**#W745**

3/4" Barbed Tsunami Pump  
fitting

**#W746**

1" Elbow Flow-Rite Connect

**#W747**

Sac Valve Thread for Tsunami  
Pump



The new Pro X Series Fat Sacs™ are constructed with a white water rafting material called Valmex. These sacs are unbelievably durable and no longer need the support of an outer shell. They also come equipped with our Quick Connect Valve system making filling and draining these things an easy task. Furthermore, the placement of our valves makes it possible to daisy-chain them to create the perfect integrated ballast system. All sacs are available in assorted colors to customize the look of your system.

**Pro X Series**  
Fat Sac

**Pro X Series Fat Sac™**

#W707 - 50x20x20 - 750 lbs.

The original Fat Sac™ redefined and setting new standards. These sacs are the most demanded on the market for their durability and ease of use. Two of these slocs will add 1500 lbs. of ballast when fully loaded.

**Pro X Series V-Drive Sacs (set)**

#W701 - 42x16x16 - 400 lbs. each

The Pro X Series V-Drive Sacs were designed to fit perfectly in the rear compartments in v-drive boats. Combined with the weight of the engine, these sacs will produce a monster wake.

**Pro X Series Fat Brick**

#W702 - 16x16x16 - 155 lbs.

This little thing weighs in at 155 pounds when full. Its handles and compact size allow you to quickly reposition it to fine-tune your boat's wake and eliminate any unwanted wash.

**Pro X Series Fat Seat**

#W710 - 1500 lbs. (patent US 6505572 B1)

The Pro X Series Fat Seat is design for inboard boats that have a removable rear seat. This thing is huge with arms that extend forward on either side of the engine compartment to add even more weight.

**Pro X Series Nautique Wedge Sacs (set)**

#W708 - 42x18x16 - 400 lbs. each

The Pro X Series Nautique Wedge sacs are shaped to fit the compartments of the new line of Nautique V-Drive boats, but can be used in any boat. They may have a lower profile but they still add a lot of weight.

**Super Air Nautique Additional Ballast System**

#W760 - 1600 lbs. (not pictured)

Includes 2 Pro X Series V-Drive Sacs • 1 Pro X Series Integrated Bow Sac • 1 Tsunami Pump • 1 Pro X Series Fat Brick • all custom fittings



available colors



available colors

### Pro X Series Integrated Bow Sac

#W711 - 1000 lbs.

The Pro X Series Integrated Bow Sac is designed to fit under the seats of open bow boats adding needed weight to the front of the boat.

### Pro X Series Tube Sac

#W704 - 62x16x10 - 370 lbs.

The Pro X Series Tube Sac can be used in the ski locker of your boat or on the floor just forward of the engine compartment. It's longer and narrow enough to fit perfectly along the walkway to the bow.

### Pro X Series Side Sacs (set)

#W703 - 48x12x12 - 260 lbs. each

The Pro X Series Side Sacs fit along the side of the engine compartment on inboard boats.

### Pro X Series Open Bow Sac

#W706 - 1200 lbs.

The Pro X Series Open Bow Sac is triangular in shape and fits open bow boats.

### Pro X Series Rear Seat Bottom

#W705 - 60x26x10 - 650 lbs.

The Pro X Series Rear Seat Sac is a smaller version of the Fat Seat minus the arms. It has a lower profile but adds a lot of weight to the rear of the boat, leaving your compartments open for storage.

### Custom Sacs

#W507-C

Special order sacs to suit your needs. We make all our Fat Sacs™ in house which gives us the ability to create custom sacs for our customers.

**Pro X Series Inboard Direct Drive Wake Surf Sac**

**#W718 - 20x60x60 - 1000 lbs.**

The Pro X Series Inboard Direct Drive Wake Surf Sac is ideal for your inboard direct drive boat. Its shape places the weight where you need it to create the desired wake for wake surfing. It can be situated on either side of the boat.

**Pro X Series V-Drive Wake Surf Sac**

**#W713 - 42x16x16 - 400lbs.**

The Pro X Series V-Drive Wake Surf Sac fits perfectly in the compartment of your v-drive boat to produce a nice wake for surfing behind your inboard v-drive boat.

**X-Star Fat Sac™ Additional Ballast System**

**#W715 / #558031 - 2500 lbs. (not pictured)**

W715 - Includes 2 Custom Rear V-Drive Compartment Sacs • 2 Custom Front Open Bow Sacs (Fittings sold separately)

558031 - Includes 2 Custom Rear V-Drive Compartment Sacs • 2 Custom Front Open Bow Sacs • 3 Custom Distribution Flow Valves • 50' of 1" reinforced black bilge hose • 3 Check Valve T-Assemblies • 30 hose clamps • all custom fittings

558031-Control System - Pump timer adds time for 07'-08' MasterCrafts (SOLD SEPARATELY)

**X-Star Bow Walkthrough Fat Sac™**

**W752 - 39x13x20 - (not pictured)**

This fat sac™ is combined with our additional ballast system for the complete package used on the Pro Wakeboarding Tour. FITTINGS SOLD SEPARATELY

**X-2 Fat Sac™ Additional Ballast System**

**#558032 - 1600 lbs. (not pictured)**

2 Custom Rear X-2 Sac • 1 Custom X-2 Integrated Bow Sac (under seats) • 3 Custom Distribution Flow Valves • 50' of 1" reinforced black bilge hose • 3 Check Valve T-Assemblies • 30 hose clamps • all custom fittings

**X-2 Integrated Bow Fat Sac™**

**W717 - 850 lbs. (not pictured)**

Designed to fit under the seats of the MasterCraft X-2, adding needed weight to the front of the boat.



available colors

**Tsunami Pump**

**#W709**

The Tsunami Pump System has a larger diameter hose which doesn't choke the pump, resulting in greater output.

**Jabsco Ballast Pump**

**#W610-P (not pictured)**

High volume, self-priming, reversible, metal ballast pump. Best for automatic ballast systems.



**Socket Splitter**

**#W405**

The socket splitter is exactly what you would expect. Use this thing to get two Tsunami Pumps flowing and fill those sacs double-time.





### Enzo Fat Sac™

#W712 (fittings sold separately)

The Enzo Sac is enormous. It's designed for v-drive boats that have an opening in the rear seat bulkhead which leads forward under the side passenger benches. The large part of the sac fills the rear storage compartments while the lower profile extension runs forward below the seats.

### MasterCraft X-2 Rear Fat Sac™

#W714 - 32x18x20 (fittings sold separately)

The X-2 Rear Fat Sac™ was designed to fit perfectly in the shorter rear compartments if this boat. It may be a bit shorter than the traditional Pro X Series Fat Sac™ but it still adds some serious weight to the boat.

### MasterCraft X-2 Integrated Bow Fat Sac™

#W717 (fittings sold separately)

The X-2 Integrated Bow Fat Sac™ was designed to fit perfectly under the open bow seats.

### Rear Gravity Games Fat Sac™

#W841 - 42x19x19 (includes W736 / W731 fittings)

The Rear Gravity Games Fat Sac™ is built to fit in the compartment of v-drive boats. Two of these sacs combined with the Center Gravity Games Fat Sac™ provide over 2,300 lbs. additional ballast to your boat. It's easy to see why this is the combination used in all the Gravity Games boats.

### Center Gravity Games Fat Sac™

#W842 - 88x19x19 (includes W736 / W731 fittings)

The Center Gravity Games Sac is only one inch smaller in width and height of a Fat Sac™, but at over 3 feet longer it weighs in at nearly twice the weight of a single Fat Sac™. Try combining this sac with two Rear Gravity Games Fat Sacs™ for one monster of a wake.

Photo: Lisa Collins



“My handle must be lightweight, durable and have a long lasting grip. That’s why I choose Fly High.”

*Tim Keppers*

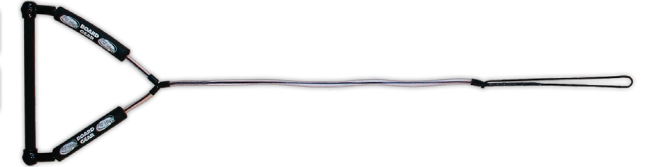
**Braided Handle**

#W503



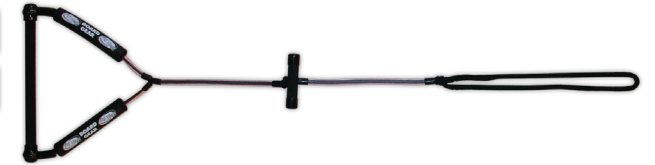
**Ultra Light Handle**

#W911



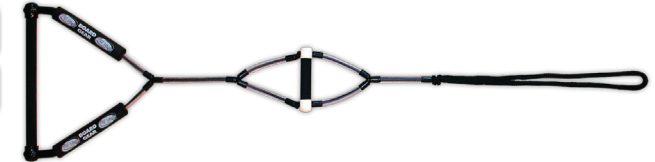
**Bad Wrap**

#W907



**Double Black Diamond**

#W908



**Wakesurf Handle**

#W915

The Wakesurf Combo is exactly what you need to get going when wake surfing. It offers the perfect grip when doing airs and is easy to ditch when you want to free surf. Comes with Poly E Plus main line.



**Spectra Fusion**

#W917

70' line with 25' of takeoff extensions in 5' increments.



**Poly E Plus**

#W905

70' line with 25' of takeoff loops in 5' increments.





**Deluxe Single/Straight Contour Boom**

**#B201**

Fits inboard competition boats with a side windshield frame forward of the pylon.

**Malibu XTI Boom**

**#B202-XTI**

Fits the Malibu XTI ski boats with retractable pylon.

**Deluxe Quad V-Drive Boom**

**#B204V**

Fits v-drive boats with a rear mounted or retractable pylons with a minimum of 3 inches of 2.5 inch diameter, non-tapered pylon showing. **DO NOT USE ON REMOVABLE QUICK RELEASE PYLONS.**

**Deluxe Straight Boom**

**#B200**

Fits inboard and outboard competition ski boats with a side windshield forward of a non-tapered pylon.

**Deluxe Universal Contour Boom**

**#B202**

Fits inboard competition boats with a side windshield frame up to 8" aft of the pylon.

**Deluxe Quad Contour Boom**

**#B204**

Fits inboard competition boats with a side windshield frame that is more than 8" aft of the pylon.

**Deluxe Gunnel Boom**

**#B205**

Fits any boat without a factory installed pylon.



**USE FOR WAKEBOARDING, BAREFOOTING, AND SKIING**

I have used my 30 years of experience and training to personally design each of the Barefoot International booms without compromising safety. They are all built to stay strong and won't damage your boat. For added safety, our booms utilize a dual stainless steel cable system that runs all the way to the attachment point at the bow. There are no levers or moving parts in my clamp designs because they can loosen or break during use. The clamps for each boom are extremely strong with heavy duty hardware to ensure they remain mounted firmly to the pylon. They also have a quick release pin which makes it easy to attach and remove the boom. Other companies use inferior designs such as a single cable system or straps which will wear out or even worse, entirely fail. . . I have seen it happen. By purchasing a Barefoot International boom you are guaranteeing that you have the highest quality, strongest, and without a doubt, safest boom on the market.

**2 Time World Barefoot Champion**

## Fly High Tower Boom

#W206 / W207 / W208 / W209

The only boom that was designed to be mounted on any tubular tower. This boom is rock solid and can be stowed by pulling three quick release pins and detaching the cable system from the bow. It can also be used to train new wakeboarders at slower speeds while an instructor directs them on what to do. (W206 fits 1.815" - 2" towers / W207 fits 2.25" - 2.5" towers / W208 - fits Cage / W209 - fits X-Star and X-80)



**Gunnel Saver (A)**

**#B114**



**Quick Release Pin (B)**

**#B113 (3") / B113-2 (2")**



**Height Adjuster (C)**

**#B107**



**Boom Extension (D)**

**#B110**



**Handle Attachment (E)**

**#B111**

**Cable Protector (F)**

**#B108**

**Boom Pad**

**#B109** (not pictured)

**Boom Bag**

**#B106** (not pictured)

**Instructional DVD**

**#B144** (not pictured)

DVD features World Champion Barefooter Mike Seipel, one of the sport's most recognized individuals.

**Hot Rockin' Feet Videos**

**#B143** (not pictured)

Hot Rockin' Feet 1 is available on DVD, and Hot Rockin' Feet 2 is available on VHS.

**Easy Footer**

**#B228**

The Easy Footer is one of the most important learning tools you can own because of the support it provides while training on a boom. It's virtually impossible to fall, allowing individuals to focus more on the positioning of their feet and body to get the perfect glide across the water. This product includes a DVD that demonstrates how to properly utilize it.



**Foot Skis**

**#B115 / B116**

Made of high density polyethylene with a non-skid pad and foam cushioned strap. B116 are a cut down version.



**Poly E Plus**

**#B227**

Our new Poly E Plus is a low stretch 100' line with three removable 10' extensions.



**Barefoot Spectra Fusion**

**#B231**

Our Spectra Fusion line is a minimal stretch 100' line with three removable 10' extensions.



**Jump Spectra Fusion**

**#B233**

Our Jump Spectra line offers the control you need. It's a minimal stretch 70' line.



**#1 selling barefoot handles in the world.**

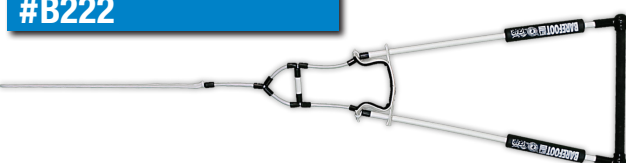
**Wakes Handle**

**#B223**



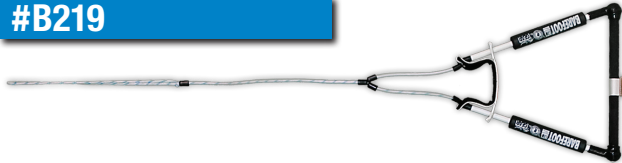
**Back Toe Handle**

**#B222**



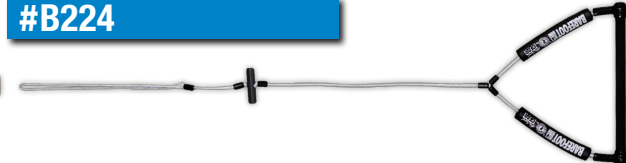
**Front Toe Handle \*\***

**#B219**



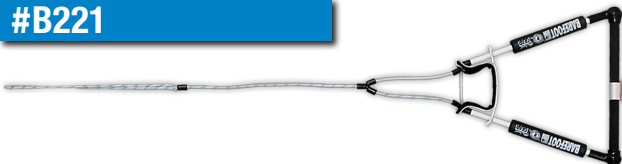
**Starts Handle**

**#B224**



**Bare Trap Handle**

**#B221**

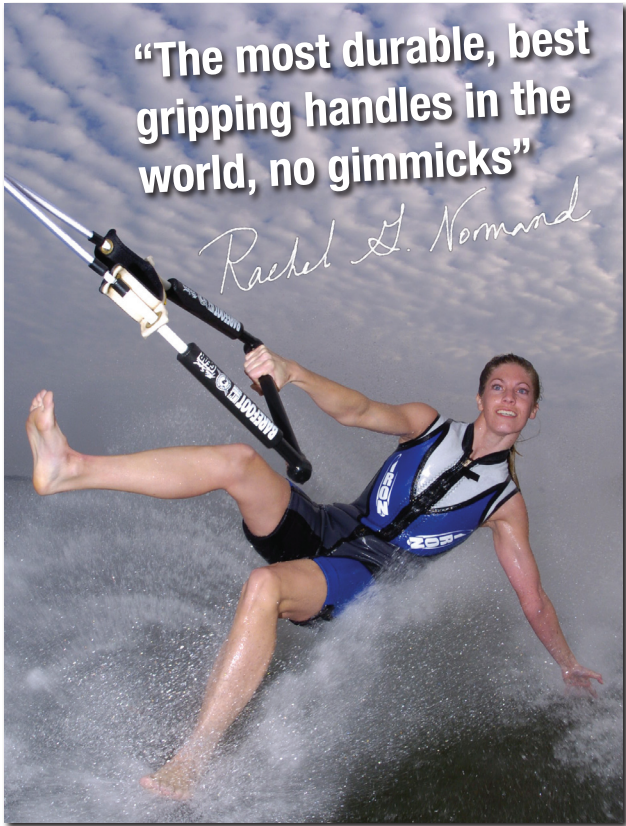


**Jump Handle**

**#B226**



\*\* Jr. Front Toe Handle B220 not pictured



**2007 Iron Sleeveless / Jr. Iron**

**#299 / #275**



**2007 Iron Short Sleeve**

**#301**



**Iron Shorts**

**#455**

When worn under Iron wetsuits, these shorts will make the glide even better.



**2006 Iron Wetsuits (while supplies last)**

**#297 / #298**

- 297 - Navy/Gray - Sleeveless
- 298 - Burgundy/Gray - Short Sleeve

**Our Iron wetsuits have double-thick flotation padding which is double-glued. This design makes it much easier to land jumps and flips. It also aids in performing deepwater starts and tumble turns.**





**Drysuit**

**#505**

This suit is designed to perform through the rigors of barefooting. It's durability makes it a great option for all water sports. They have double-thick seals with a unique neoprene overlay to keep you dry and make the seals last longer.



**Heater Shirt**

**#456**

The 0.5mm neoprene heater shirt will keep you warm when it's cool.

**Wet/Dry Bag**

**#118**

This bag has separate compartments for your gear. The wet compartment allows your equipment to breath.



**Zip/Seal Tech**

**#134 / 132**

Extends the life of your zippers and seals.





*Mike Seipel*

2 Time World Barefoot Champion



**barefoot**  
international  
2008-2009 PRODUCTS



Made in USA