



2010 DEALER BOOK

HYPERLITE.
WAKEBOARDS

TECH GUIDE



GND

Product designed by one of wakeboarding's true innovators Greg Nelson



SHAPED BY BUTCH

Designed by the pioneer of the 3 stage rocker... Scott Bouchard.



NOVA CORE

Named after an exploding star, Nova core gets its title through its release of energy off the wake. This core material is the lightest, most advanced polymer on the market. It is fully machined to a perfect tolerance, and then laid up for a ride like no other.



FUSION CORE

Fusion is just that, our two best core materials put together to create a strong yet snappy ride, then machined for a perfect fit.



BIO 2 CORE

Our secret little recipe we have been perfecting since day one. This core material is the gold standard in the industry and used throughout our line.



E CORE

Innovation thru energy. A 100% wood core brings the life of your favorite snowboard and a new dimension of wake to wake feel and control on rails.



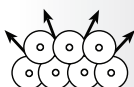
GAMMA GLASS

This is our most advanced glass system to date. Kept frozen until the time of lay up, Gamma glass is fully impregnated with a resin system which activates after the mold is closed. This allows for the perfect ratio of resin to glass.



CARBON GRAPHITE

Aerospace grade carbon graphite builds unmatched strength and energy into every board it's put into.



PHALANX CONSTRUCTION

Named after one of the most impenetrable military formations in history. Phalanx construction is just that, a new method of building a board which joins the top laminates to the bottom creating the strongest construction possible.



ABS SIDEWALL

You have one of those rides where nothing is going your way. Just feel like smashing your board? If you have to take it out on something... Hope you have ABS.



MONOCOQUE CONSTRUCTION

Integrating the top glass and the bottom glass into one. Generating a more durable board on side impacts thus preventing the ol' side delamination.



LAYERED GLASS

Non-woven glass available in 4 sizes depending on the board. Over time, woven glass fibers will separate. Every Hyperlite deck will have the same snap on a double after 5 seasons as it will on the first one.



SATIN FLEX

Tailored specifically to a ladies needs. A softer glass lay up to create a softer flex and a board built to female riders standards.



REAL WOOD INLAY

A little piece of Mother Nature sealed into every board. These inlays are 100% real Burl wood. Lumberjack not included.



METAL FLAKE TOP

Boats shouldn't be the only ones cruising around with a little extra flash

RUSTY MALINOSKI PRO MODEL

MAREK NOVA



NEW
for '10



TOP

BASE

SIZES:

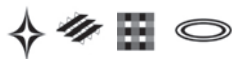
136cm 141cm 146cm

FINS:

• 4 - 1.0 P-Wing

FEATURES:

- Shaped by Aaron Stumpf
- Fully machined Nova Core
- Strata Track Mounting System
- Carbon Torsion Zones
- Abrupt Continuous Rocker
- Two Stage Channel
- 9° Angled Fins
- Molded Landing Feature
- Monocoque Construction
- Layered Glass
- Built in the USA



WAKEBOARDS

RUSTY MALINOSKI PRO MODEL

MAREK BIO



NEW
for '10



SIZES:

136cm 141cm

FINS:

• 4 - 1.0 P-Wing

FEATURES:

- Shaped by Aaron Stumpf
- Carbon Torsion Zones
- Abrupt Continuous Rocker
- Two Stage Channel
- Biolite Core
- 9° Angled Fins
- Molded Landing Feature
- Monocoque Construction
- Layered Glass
- Built in the USA



WAKEBOARDS

SHAUN MURRAY PRO MODEL

MURRAY NOVA

NEW
for '10



SIZES:

137cm 142cm

FINS :

• 4 - .85 I-Wing

FEATURES:

- Greg Nelson Design
- Strata Track Mounting System
- Carbon Torsion Zones
- Subtle 3-Stage Rocker Line
- Dual tip / tail tunnels
- Canted Footbed
- Variable Edge Design
- Monocoque Construction
- Nova Core
- Layered Glass
- Built in the USA



WAKEBOARDS

SHAUN MURRAY PRO MODEL

MURRAY BIO



NEW
for '10

SIZES:

137cm 142cm

FINS :

• 4 - .85 I-Wing

FEATURES:

- Greg Nelson Design
- Carbon Torsion Zones
- Subtle 3-Stage Rocker Line
- Dual tip / tail tunnels
- Canted Footbed
- Variable Edge Design
- Monocoque Construction
- Biolite Core
- Layered Glass
- Built in the USA



WAKEBOARDS

JD WEBB PRO MODEL

B-SIDE



SIZES:

136cm 140cm 144cm

FINS :

• 2 - 0.8 I-Wing

FEATURES:

- Shaped by Butch
- Blended 3-stage rocker
- Molded-in ABS fins
- Shaped Center Landing Zone
- B-Side Badge
- UV Clear top
- Monocoque Construction
- Biolite Core
- Layered Glass



WAKEBOARDS

HYPERLITE TRIBUTE



SIZES:

132cm 137cm 142cm

FINS :

• 2 - 0.7" A-Wing

FEATURES:

- Greg Nelson Design
- Continuous Rocker
- Variable Edge Design
- Small Molded In fin
- Curved Flow Channels
- Small Soft Landing Feature
- Top Contours for Max. Weight Reduction
- Biolite Core
- Monocoque Construction
- Layered Glass



WAKEBOARDS

NICK DAVIES PRO MODEL

CLASH

CABLE SPECIFIC BOARD
USED BY CURRENT WORLD CABLE CHAMPION - NICK DAVIES



SIZES:

138cm 142cm

FINS :

4 - .8" Poly A-Wing

FEATURES:

- 6 Degree Angled Fins
- Abrupt Continuous Rocker
- Outer Guide Molded-in Fins
- Subtle Step-Down Rail
- Monocoque Construction
- Layered Glass
- Enduro Base



WAKEBOARDS

HYPERLITE
PREMIER



SIZES:

131cm 136cm 141cm

FNS:

• 2 - .8" Poly A-Wing

FEATURES:

- Thin Overall Profile
- Subtle 3-Stage Rocker
- Concave top deck
- Cupped Rails
- Molded-in fins
- Monocoque Construction
- Layered Glass



HYPERLITE

FOREFRONT PACKAGE



SIZES:

129cm 134cm 139cm 144cm

FEATURES:

- Package specific shape
- Asymmetrical shape
- Molded in toe side footbed risers
- Counterbalancing top contours
- Toe side channel extensions for improved toe side edge hold
- Molded in anti-slip fin
- Variable edge design
- Continuous rocker
- Reduced swing weight
- Greg Nelson Design



FINS:

- 2 - 1.3" Disorder toe side fins
- 2 - .8" Poly A-Wing heel side
- 2 Additional .8" Poly A-Wing fins

WAKEBOARDS

STATE

HYPERLITE
PACKAGE



SIZES:

130cm 135cm 140cm 145cm

FINS :

• 2 - 1.3" Disorder

FEATURES:

- Toe Side / Heel Side Specific Edges
- Deeper Molded-in Toeside Fin
- Shallower Molded-in Heelside Fin
- Outer Molded-in Stabilizers
- Subtle 3-Stage Rocker
- Monocoque Construction
- Layered Glass



WAKEBOARDS

HYPERLITE MOTIVE PACKAGE



SIZES:
134cm 140cm

FINS:
• 2 - 1.3" Disorder

FEATURES:

- Molded-in Fins
- Continuous Rocker
- V Bottom Tunnel
- 6° Edge Bevel
- Monocoque Construction
- Layered Glass



HYPERLITE
ROAM



SIZES:

140cm 145cm

FEATURES:

- E Core
- Torsion Flex
- ABS Side Wall
- Layered Glass
- Enduro Base

E-CORE **ABS**





**HYPERLITE.
BINDINGS**

HYPERLITE BINDINGS

MAREK



FEATURES:

- Low Pro plate system
- Asymmetrical design
- 1 pull lacing system
- Internal wrap construction
- Dual density pro footbed
- Flow through drain panels
- Removable claw ring
- Painted / UV clear plate

SIZES:

7-8, 9, 10, 11, 12-13, 13-14

BINDINGS

HYPERLITE BINDINGS
AUDIO



FEATURES:

- Low Pro plate system
- Quick Cinch upper lace zone
- BOA Lower closure zone
- Internal wrap construction
- Lower cuff
- Dual density pro footbed
- Flow through drain panels
- Removable claw ring
- Painted / UV clear plate

SIZES:

7-8, 9, 10, 11, 12-13, 13-14

HYPERLITE BINDINGS

TEAM



FEATURES:

- Low Pro Plate System
- Dual Quick Cinch lace zones
- Internal seamless construction
- Dual density pro footbed
- Flow through drain panels
- Removable claw ring
- Painted / UV clear plate

SIZES:

6-7, 7-8, 9, 10, 11, 12-13

BINDINGS

HYPERLITE BINDINGS
FOCUS



FEATURES:

- Low Pro Plate System
- Hyperplush Rear Flex Zone
- Two Piece Construction
- Fully Floating Adjustable Toe
- Toe Tension System
- True Fit Top Closure System
- Quick Cinch Lower Lace Zone
- Articulating Cuff
- Painted / UV clear plate
- Dual Density Footbed

SIZES:

MINI, STD, XL

BINDINGS

HYPERLITE BINDINGS

REMIX



FEATURES:

- Low Pro Plate System
- Hyperplush Rear Flex Zone
- New Two Piece Construction
- Adjustable/Fixed Floating Toe
- Dual Quick Cinch Front Lace Zones
- Single Density Footbed
- Painted / UV clear plate

SIZES:

MINI, STD, XL

BINDINGS

HYPERLITE BINDINGS

SPRINT



FEATURES:

- Low Pro Plate System
- Rear Flex Zone
- Soft Molded EVA Heel
- Adjustable Floating Molded EVA Toe
- Quick Cinch Lace Zone
- Single Density Footbed

SIZES:

KIDS, MINI, STD, XL

BINDINGS

HYPERLITE BINDINGS

FREAK1CY



FEATURES:

- Traditional Claw plate
- Floating EVA toe
- Elastic laces
- Molded EVA Heel

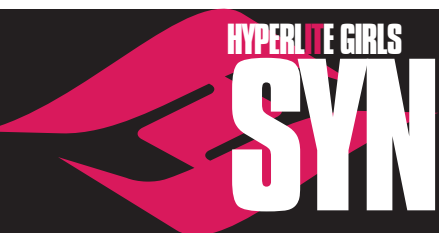
SIZES:

One size fits all.

BINDINGS



**HYPERLITE.GIRLS.
WAKEBOARDS**



SIZES:

132cm 137cm

FINS :

• 2 - 0.7" A-Wing

FEATURES:

- Greg Nelson Design
- Continuous Rocker
- Variable Edge Design
- Small Molded In fin
- Curved Flow Channels
- Small Soft Landing Feature
- Top Contours for Weight Reduction
- Layered Glass
- Satin Flex



WAKEBOARDS

HYPERLITE GIRLS
BLUR



131



136



BASE

SIZES:

131cm 136cm

FINS:

• 2.7" - A-Wing

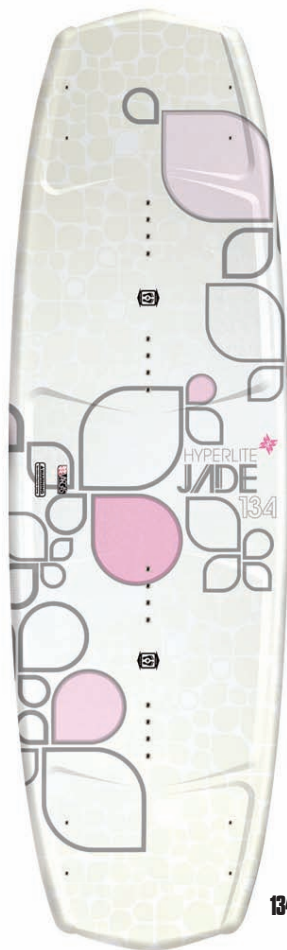
FEATURES:

- Subtle 3-Stage Rocker
- Concave top deck
- Cupped Rails
- Molded-In Fin
- Layered Glass
- Satin Flex



HYPERLITE GIRLS

JADE PACKAGE



SIZES:

129cm 134cm

FEATURES:

- New package specific shape
- Asymmetrical shape
- Molded in toe side footbed risers
- Counterbalancing top contours
- Toe side channel extensions for improved toe side edge hold
- Molded in anti-slip fin
- Variable edge design
- Continuous rocker
- Reduced swing weight
- Satin flex
- Greg Nelson Design



FINS:

- 2 - 1.3" Disorder toe side fins
- 2 - .8" Poly A-Wing heel side
- 2 additional .8" Poly A-Wing fins

WAKEBOARDS

HYPERLITE GIRLS
EDEN PACKAGE



125

130

135

BASE

SIZES:

125cm 130cm 135cm

FINS :

• 2- 1.3" Disorder

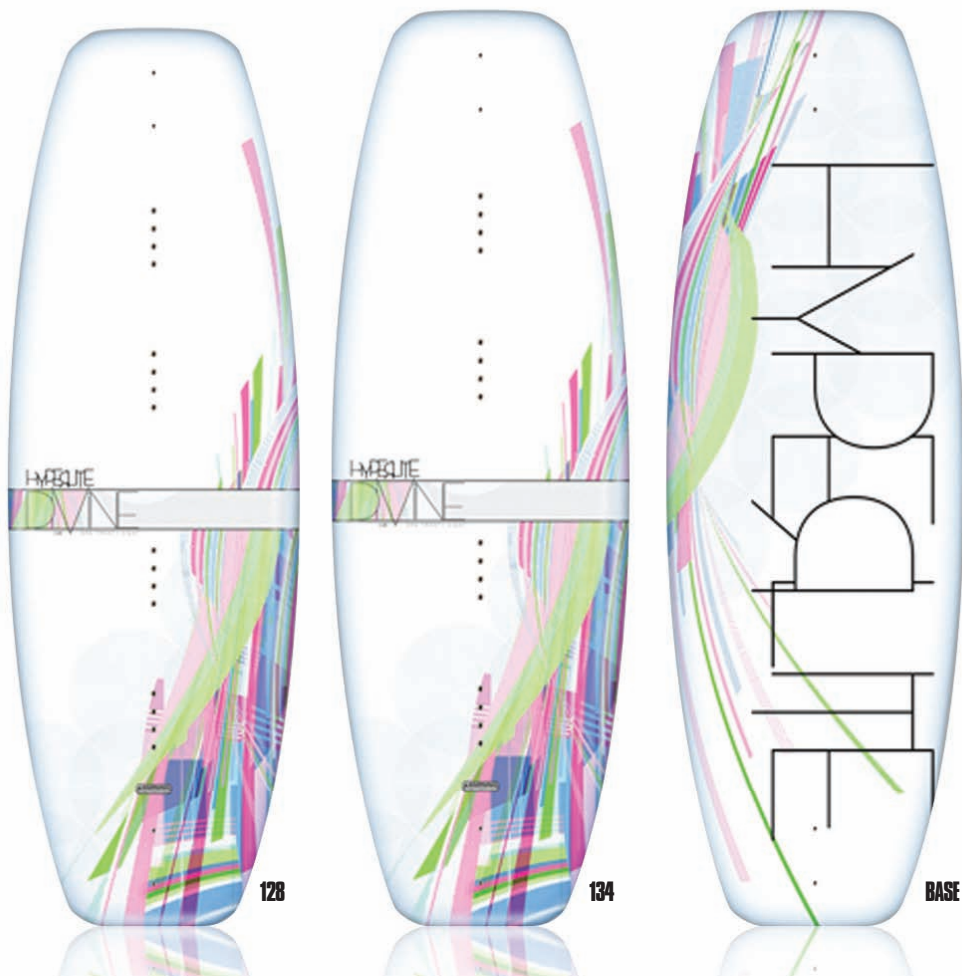
FEATURES:

- Toe Side / Heel Side Specific Edges
- Deeper Molded-in Toeside Fin
- Shallower Molded-in Heelside Fin
- Outer Molded-in Stabilizers
- Subtle 3-Stage Rocker
- Satin Flex
- Monocoque Construction
- Layered Glass



HYPERLITE GIRLS

DIVINE PACKAGE



SIZES:

128cm 134cm

FINS :

• 2-1.3" Disorder

FEATURES:

- Molded-in Fins
- Continuous Rocker
- V Bottom Tunnel
- 6° Edge Bevel
- Monocoque Construction
- Layered Glass



WAKEBOARDS



**HYPERLITE.GIRLS.
BINDINGS**

HYPERLITE GIRLS
SYN



FEATURES:

- Low Pro plate system
- Women's specific fit
- Dual Quick Cinch lace zones
- Option 2 strap
- Classic sneaker fit construction
- Articulating cuff
- Dual density pro footbed
- Flow through drain panels
- Removable claw ring
- Painted / UV clear plate

SIZES:

6-7, 8, 9-10 (Women's)

BINDINGS

HYPERLITE GIRLS
BLUR



FEATURES:

- Low Pro Plate System
- Hyperplush Rear Flex Zone
- Two Piece Construction
- Fully Floating Adjustable Toe
- Toe Tension System
- True Fit Top Closure System
- Quick Cinch Lower Lace Zone
- Articulating Cuff
- Painted / UV clear plate
- Dual Density Footbed

SIZES:

Mini, STD

BINDINGS

HYPERLITE GIRLS

JINX



FEATURES:

- Low Pro Plate System
- Hyperplush Rear Flex Zone
- New Two Piece Construction
- Adjustable/Fixed Floating Toe
- Dual Quick Cinch Front Lace Zones
- Single Density Footbed
- Painted / UV clear plate

SIZES:

Mini, STD

BINDINGS

HYPERLITE GIRLS

IVY



FEATURES:

- Low Pro Plate System
- Rear Flex Zone
- Soft Molded EVA Heel
- Adjustable Floating Molded EVA Toe
- Quick Cinch Lace Zone
- Single Density Footbed

SIZES:

Mini, STD

BINDINGS

HYPERLITE GIRLS

ALLURE



FEATURES:

- Traditional Claw plate
- Floating EVA toe
- Elastic laces
- Molded EVA Heel

SIZES:

One Size Fits All

BINDINGS



HYPERLITE.JNR
WAKEBOARDS

HYPERLITE JNR
STATE



SIZES:

125cm

FEATURES:

- Subtle 3-Stage Rocker
- Concave Top Deck
- Tip to Tail Step Down Rail
- Cupped Rail
- Molded-in Fins
- Layered Glass
- Monocoque Construction



FINS :

• 2 - 1.1 A-Wing

HYPERLITE JNR MOTIVE



SIZES:

109cm 119cm

FINS :

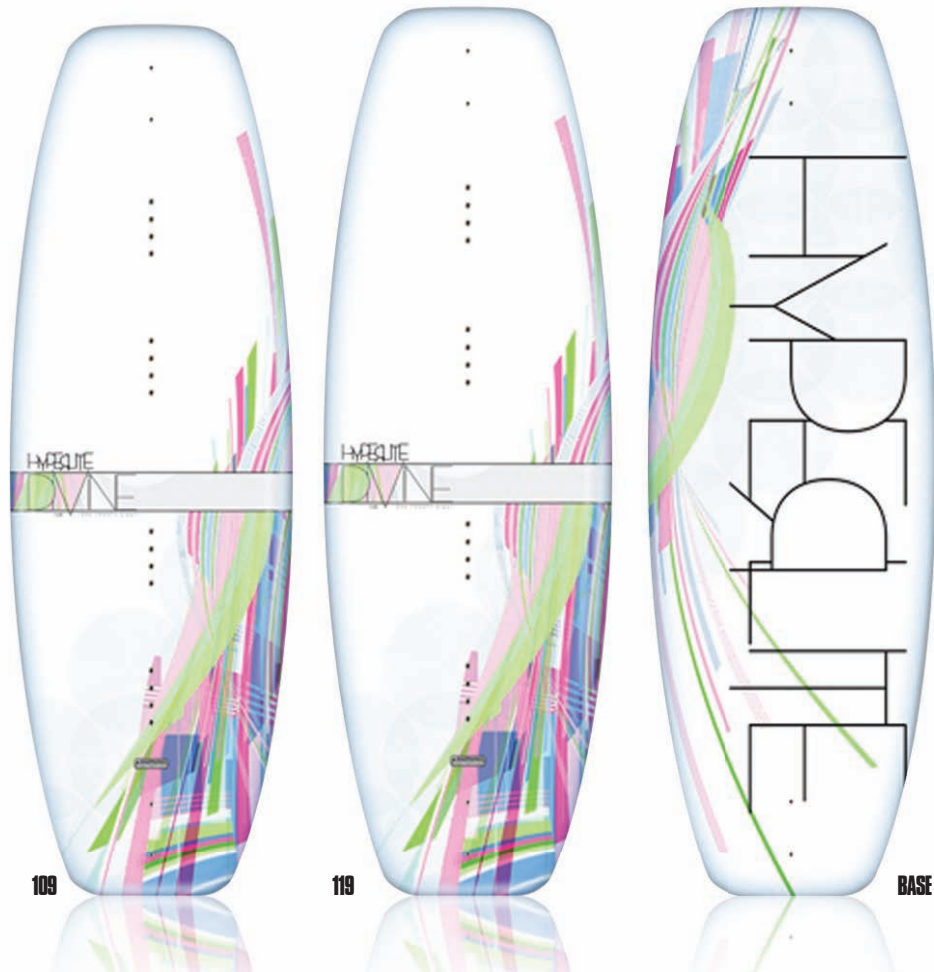
• 2 - 1.3" Disorder

FEATURES:

- Molded-in Fins
- Continuous Rocker
- V Bottom Tunnel
- 6° Edge Bevel
- Monocoque Construction
- Layered Glass



HYPERLITE JNR
DIVINE



SIZES:

109cm 119cm

FINS :

• 2 - 1.3" Disorder

FEATURES:

- Molded-in Fins
- Continuous Rocker
- 6° Edge Bevel
- V Bottom Tunnel
- Monocoque Construction
- Layered Glass



QUESTA

CATALYST.
WAKESKATES

BY HYPERLITE

WAKESKATES

CATALYST WAKESKATES
VINYL



SIZES:

41"

FEATURES:

- Bi-Level shape
- Thin compression molded base
- Very durable, won't warp, crack, or lose rocker
- Molded in top contours for added strength
- Molded base features
- Exact edge bevel and features
- 9 ply wood top deck



FINS:

• 2 - Shank

CATALYST WAKESKATES

NOMAD



SIZES:

42" 44"

FEATURES:

- Shaped by Butch
- EVA / Griptape Blended Top
- Wide Profile
- Deeper Top Concaves and Kicktail
- Blended 3-Stage Rocker
- Dual Tip/Tail Channels
- Layered Glass
- Limited Lifetime Warranty



FINS:

• 2 - Shank

WAKESKATE

CATALYST WAKESKATES
URSO



SIZES:

39" 41"

FINS:

• 2 - .85" I-Wing

FEATURES:

- 16 ply wood deck
- Continuous rocker
- Variable edge bevel
- Concave top deck
- Die cut Grip Tape

WAKESKATE

CATALYST WAKESKATES

PARAGON



SIZES:

42" 44" 46"

FINS:

• 2 - Disorder fins

FEATURES:

- 9 Ply wood construction
- EVA Pad
- Pronounced Kicktails
- Die Cut Logo

WAKESKATE

CATALYST WAKESKATES
STYLUS



SIZES:

41" 43" 45"

FINS:

• 2 - Disorder fins

FEATURES:

- Grey Eva top
- 9 Ply wood construction
- Heat transferred base graphic

WAKESURF

SWELL



SIZES:

4' 3"

FINS:

• 1.1" Aluminum A-Wing fin

FEATURES:

- True surf board construction
- EPS core (Sonic Core)
- Full seamless edge epoxy construction & wood top deck reinforcement
- Duraclear base laminate
- Shorter, wider profile
- Almost symmetrical tip / tail
- Board rides very similar switch
- Greg Nelson Design
- UV Clear Finish

WAKESURF

WAKESURF
COEX



TOP



BASE

SIZES:

4' 4"

FINS:

• 1 - 1.3" Disorder

FEATURES:

- Rolled Edge
- EVA Pad
- Die Cut Logo
- Monocoque Construction
- Layered Glass

WAKESURF

BROADCAST



SIZES:

4'9" 5'6"

FEATURES:

- EVA Pad
- Die Cut Logo
- Monocoque Construction
- Layered Glass

FINS :

- 2 - 1.3" Disorder fin
- 1 - 2.1" Sure Thing fin

WAKESURF

WAKESURF

LANDLOCK



TOP



BASE

SIZES:

5'11"

FEATURES:

- Rolled Edge
- EVA Pad
- Die Cut Logo
- Monocoque Construction
- Layered Glass

FINS :

- 1 - 1.3" Disorder

WAKESURF

HYPERLITE

VESTS



JD WEBB NCGA

SIZES:
S-XXL

FEATURES:

This competition pullover is made of 100% 4-way stretch material. Strategically placed foam panels allow for maximum range of motion. Made to the standards of JD Webb and the Hyperlite Pro Team, this vest is so comfortable, you won't even know you've got it on.

- Non Coast Guard Approved – This is not a Life Jacket
- Made of 100% 4-Way Stretch Material
- Light Weight Pullover Allows Maximum Mobility.
- New for 2010 – updated foam panels with increased flotation

VESTS

HYPERLITE VESTS



CATALYST NCGA

SIZES:
S-XXL

FEATURES:

A non-restrictive design allows this lightweight, impact-resistant vest full mobility and ultimate comfort. Segmented front panels and thinner foam combine to make this one of the most comfortable vests on the market. A little longer than our standard vest with lower straps to ensure this one won't ride up on you.

- Non Coast Guard Approved – This is not a Life Jacket
- Segmented Foam Panels
- Mesh Bottom Drains
- 2 Concealed 1.5" Straps

VESTS

HYPERLITE

VESTS



THE FIVE NCGA



SIZES:
S-XXL

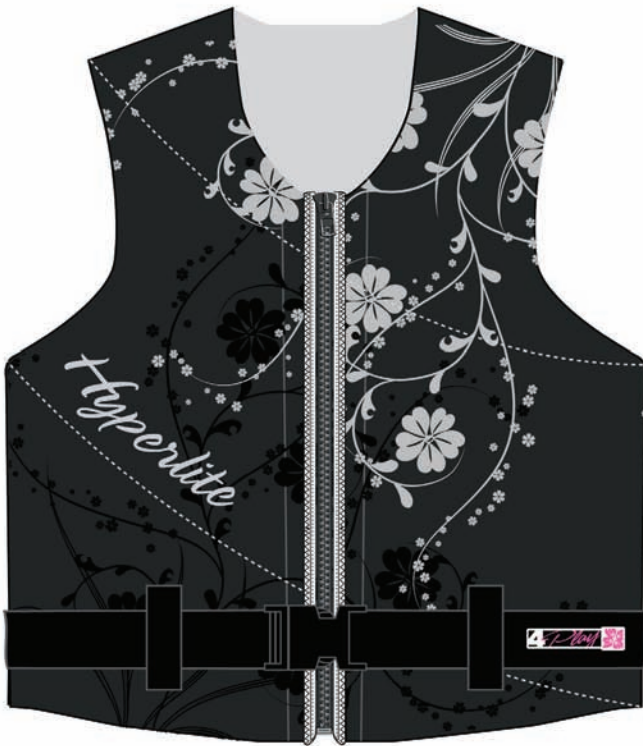
FEATURES:

A shorter cut version of the Catalyst series; this vest is built for the rider looking for maximum range of motion at the waist level. Key features include Glideskin, segmented foam panels, a hidden belt and mesh drain panels.

- Non Coast Guard Approved – This is not a Life Jacket
- Segmented Foam Panels
- Mesh Bottom Drains
- 1 Concealed 1.5" Strap

VESTS

HYPERLITE VESTS



4PLAY NCGA

SIZES:
XS-XL

FEATURES:

No, no ladies, this jacket is best when putting it on. Designed specifically for conforming and complimenting the lady figure, the 4Play comp vest has a shorter overall height, thinner shoulder straps, larger arm holes and the contours to fit a queen.

- Non Coast Guard Approved – This is not a Life Jacket
- Segmented Foam Panels
- Mesh Bottom Drains
- 1 Concealed 1.5" Strap

VESTS

HYPERLITE

VESTS

SPECIAL AGENT RED

SIZES:
S-XXL

FEATURES:

Our best selling Agent Series is a USCGA vest collection with the stamp of approval from the Hyperlite Pro Team. These vests are constructed with a unique 4-panel design. They allow freedom of motion in all directions while the dispersion of foam among the four panels allows for a thinner fitting vest. The side panels conform to a rider's ribs and with the segmented foam you can move like you weren't wearing a vest at all. What more could you ask for?

- 4 Panel Construction
- Segmented Foam Panels
- Independent Segmented Rib Panel
- 2 Concealed 1.5" Straps
- Mesh Bottom Drains
- USCG Approved Type III Personal Flotation Device



SPECIAL AGENT SILVER

SIZES:
S-XXL



VESTS

HYPERLITE VESTS

SIDE ENTRY

SIZES:
S-XXL

FEATURES:

Back by popular demand, this USCGA vest is as tech as they come. Features include Glideskin, hidden buckles, segmented foam panels, an angled zipper and cutting edge artwork. You won't be lacking in style with this PFD.

- USCG Approved Type III Personal Flotation Device
- 2 Concealed 1.5" Straps
- Segmented Front Foam Panels for Maximum Mobility
- Mesh Bottom Drains



MENS INDY

SIZES:
S-XXXL

FEATURES:

The Men's Indy Vest is the vest of choice from the recreational rider to the seasoned professional. Great all around neoprene vest at an affordable price. Stylish and comfortable, this vest will leave you with gas money for the weekend.

- USCG Approved Type III Personal Flotation Device
- 2 Concealed 1.5" Straps
- Segmented Foam Panels
- Mesh Bottom Drains



VESTS

HYPERLITE

VESTS

PROFILE BLUE

SIZES:

XS-XL

FEATURES:

Specifically for women - Full flex panels combined with an anatomically correct cut give this series a flawless fit without sacrificing mobility. A new level of comfort for women.

- USCG Approved Type III Personal Flotation Device
- Molded Chest Cups
- One-Piece wrap around torso foam
- Mesh Bottom Drains
- 2 Concealed 1.5" Straps



PROFILE PINK

SIZES:

XS-XL



VESTS

HYPERLITE
VESTS

INDY PINK

FEATURES:

A classic style and shape make this a great all-around vest at a reasonable price. Women's specific graphics compliment your favorite setup.

- USCG Approved Type III Personal Flotation Device
- 2 Concealed 1.5" Straps
- Mesh Bottom Drains



SIZES:

XS-L

INDY BLUE

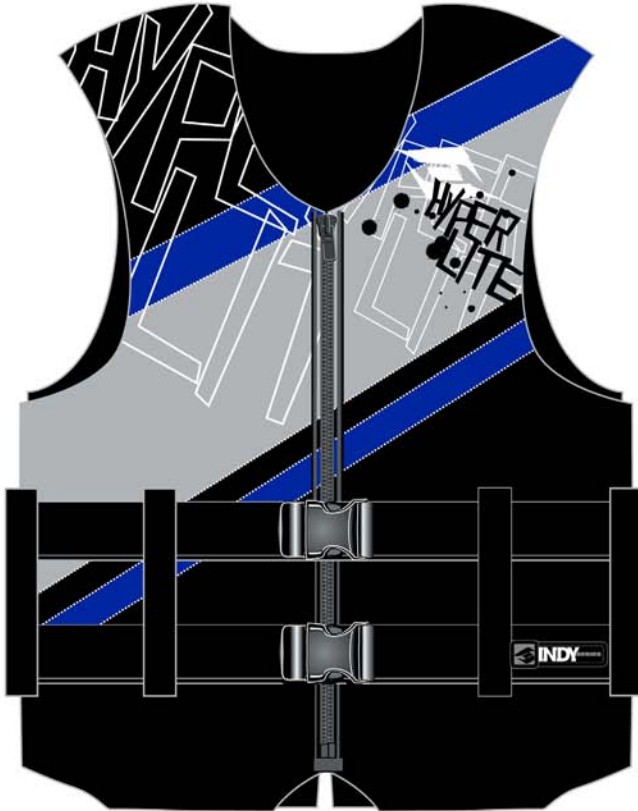


SIZES:

XS-L

HYPERLITE

VESTS



STATE TEEN INDY

SIZES:
28" - 32"

FEATURES:

Scaled down version of our popular Men's Indy vest. Sized for the next generation of ripper. Fits chest sizes 28" - 32".

VESTS

HYPERLITE VESTS

BOYS YOUTH INDY

SIZES:
50 - 90 lbs

FEATURES:

Comfort and safety make these high-end vests a perfect fit for your growing children.



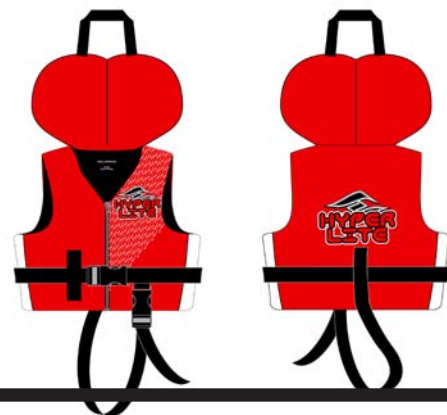
BOYS CHILD INDY

SIZES:
30 - 50 lbs



BOYS TODDLER INDY

SIZES:
up to 30 lbs



VESTS

HYPERLITE

VESTS

GIRLS YOUTH INDY

SIZES:

50 - 90 lbs

FEATURES:

Excellent flotation for all sizes -
Scaled down versions of the Indy's
for the next generation rippers



GIRLS CHILD INDY

SIZES:

30 - 50 lbs



GIRLS TODDLER INDY

SIZES:

up to 30 lbs



VESTS

HYPERLITE VESTS

KIDS YOUTH UNITE

SIZES:
50 - 90 lbs

FEATURES:

Approval from the powers of the guard at the most affordable price. A good nylon vest styled just right for the younger water sports enthusiast.



KIDS CHILD UNITE

SIZES:
30 - 50 lbs



KIDS TODDLER UNITE

SIZES:
up to 30 lbs



VESTS

HYPERLITE

APPAREL



HYPERLITE BOLD ZIP HOODIE

Tone on Tone Ink on 9 oz Black Hoodie S-XXL



HYPERLITE TRACTION ZIP HOODIE

Reflective Ink on Charcoal 9 oz Hoodie S-XXL

APPAREL

HYPERLITE

APPAREL



HYPERLITE BOLD TEE

Tone on Tone Ink on Black
Slim/Regular Fit Tee S-XXL



HYPERLITE TITLE TEE

Full Frontal Screened on Black
Slim/Regular Fit Tee S-XXL



HYPERLITE HYPER TEE

Broken 2 Color Logo on Electric Blue
Slim/Regular Fit Tee S-XXL



HYPERLITE LOGO TEE

Reflective Ink on White
Slim/Regular Fit Tee S-XXL

APPAREL

HYPERLITE

APPAREL

HYPERLITE IT GIRLS HOODIE

All White with 2 Color Screen on 9oz Zip
Women's Fit Hoodie S-XL



HYPERLITE WMNS ICON JR TEE

Black Junior Fit Tee with 2 Color Screen S-XL



HYPERLITE WMNS LOGO CREW TEE

White Crew Fit Tee with 2 Color Screen S-XL

APPAREL

HYPERLITE

APPAREL



HYPERLITE NEW ERA TONE LOGO

White on White and Black on Black Embroidery with Neon Accents.

New Era Fitted Hat Sizes 7 ¼ - 7 ⅜ - 7 ½ - 7 ¾



HYPERLITE NEW ERA TEAM HAT

All Over Silver Embroidery and Under Visor Screen.

New Era Fitted Hat Sizes 7 ¼ - 7 ⅜ - 7 ½ - 7 ¾



HYPERLITE NEW ERA MESH BACK HAT

Black Mesh Back Fitted New Era Hat with Neon Icon.

New Era Fitted Hat Sizes 7 ¼ - 7 ⅜ - 7 ½ - 7 ¾



HYPERLITE CATALYST HAT

Flex Fit Catalyst Hat with All Over Print.

Flex Fit Sizing S/M & L/XL

APPAREL

HYPERLITE

BAGS

**CAPITAL
BACKPACK**



**GEN M
BACKPACK**



**DIVINE
BACKPACK**



**WAKEBOARD
RUBBER
WRAP**



BAGS

HYPERLITE

BAGS

**DELUXE
WHEELIE**



**TEAM
BAG**



**PRODUCER
BAG**



**LADIES
PRODUCER
BAG**



BAGS

HYPERLITE
BAGS

**CATALYST
SKATE BAG**



**ESSENTIAL
BAG**



**LADIES
ESSENTIAL BAG**



**MGMT
BAG**



**BENDER
BAG**

BAGS

HYPERLITE

HELMETS

**MENS
STEP UP**



**WOMENS
KINK'D**



**JNR
SERIES**



MOTIVE



DIVINE

HELMETS

HYPERLITE TEAM DVD

REWRITTEN



REWRITTEN- HYPERLITE TEAM FILM

Nearly three years in the making, Hyperlite is excited to announce the premier of its new team film *Rewritten*. Shot through the eyes of former Hyperlite team rider Keith Kipp and produced by Alliance MultiMedia and Josh McWilliams, *Rewritten* offers you the inside perspective of being part of one of the most elite teams in the industry. Never before has there been a feature that tells the real story of the team, its individual members, and how they all ride together for one brand. From the company that started it all and with the biggest names in the sport, get ready to enjoy a wakeboard film that has rewritten the standard.

DVD



**ACCURATE.
ROPES & HANDLES**

MAREK CARBON HANDLE

FEATURES:

- Non-Continuous Loop Construction
- Inside EVA to protect your hands
- Offered in Straight or "T" wrap options
- Endorsed by Rusty Malinoski



CATALYST CARBON HANDLE

FEATURES:

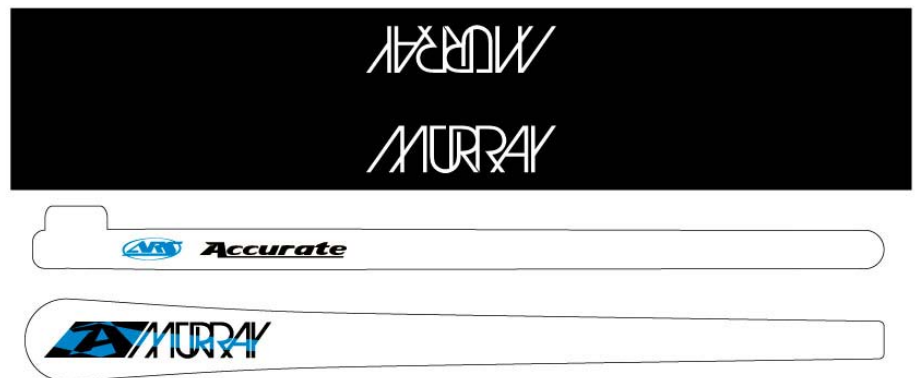
- Non-Continuous Loop Construction
- Inside EVA to protect your hands
- Offered in Straight or "T" wrap options
- Endorsed by Brian Grubb



MURRAY CHAMOIS HANDLE

FEATURES:

- Chamois Grip
- ARS (Anti-Roll System) Equipped
- 15" Length offered in Straight, "T" or "V" wrap options
- Endorsed by Shaun Murray



REVERB HANDLE



FEATURES:

- 5mm thick machined EVA grip
- ARS (Anti-Roll System) Equipped
- 15" length offered in straight or "T" options

PRIME HANDLE



FEATURES:

- 4mm thick EVA grip
- Dual Density EVA strips
- ARS (Anti-Roll System) Equipped
- 15" Length offered in Straight or "T" wrap options

VIVID HANDLE



FEATURES:

- Chamois Grip designed for the Ladies
- ARS (Anti-Roll System) Equipped
- 15" Length offered in Straight or "T" wrap options
- Available with a 70' Vivid Line



ACCURATE

A-LINE

FEATURES:

- Stiff 12 strand braided dyneema core
- Urethane cable coating over the core
- 80' total length with 3'-5' sections
- Smooth outer surface



X-LINE

FEATURES:

- Stiff 12 strand braided dyneema core
- Urethane cable coating over the core
- 70' total length with 3'-5' sections
- Smooth outer surface

NFINITE ADJUSTER

FEATURES:

- Create your own length!
- 80' Total length



ACCURATE

JACKET MAINLINE



FEATURES

- Closed cell neoprene inner core
- 100% linear spectra outer core
- 70' total length

FUSE MAINLINE



FEATURES

- 100% dyneema core
- Polyethylene outer braided jacket
- 70' total length

ULTRA SPECTRA



FEATURES:

- 100% pure spectra
- 65' total length

ACCURATE

CHAMOIS HANDLE

FEATURES:

- Embroidered Chamois Style Grip
- ARS (Anti-Roll System) Equipped
- 15" Length Handle
- Available with a Fuse, X-Line or an A-Line



APEX PE EVA HANDLE

FEATURES:

- Soft molded 5mm EVA Grip
- Handle strung with Poly-E Rope
- 6" finger protector end caps
- Available with a Poly-E, Maxim, or Fuse Line



SURF ROPE & HANDLE

FEATURES:

- 10" Molded EVA Handle
- 4 Foam Floats in 2ft Increments
- 20' Total Length

